



Price
£300,000

Freehold

3x  1x  1x 

**Buckingham Row,
Maidstone, Kent ME15**

Wards
Helping you move forwards



Main features

- Spacious family house
- Ideal first time buy or investment opportunity
- Beautifully presented throughout
- Generous size garden, no onward chain
- Popular location being close to schools and amenities

Accommodation

GROUND FLOOR

Lobby

Lounge/Diner: 19'2 x 12'9 (5.85m x 3.89m)

Kitchen: 10'9 x 9'9 (3.28m x 2.97m)

Utility Room: 10'8 x 5'9 (3.25m x 1.75m)

FIRST FLOOR

Landing

Bedroom 1: 13'0 x 9'7 (3.97m x 2.92m)

Bedroom 2: 13'7 x 9'3 (4.14m x 2.82m)

Bedroom 3: 10'9 x 6'7 (3.28m x 2.01m)

Bathroom

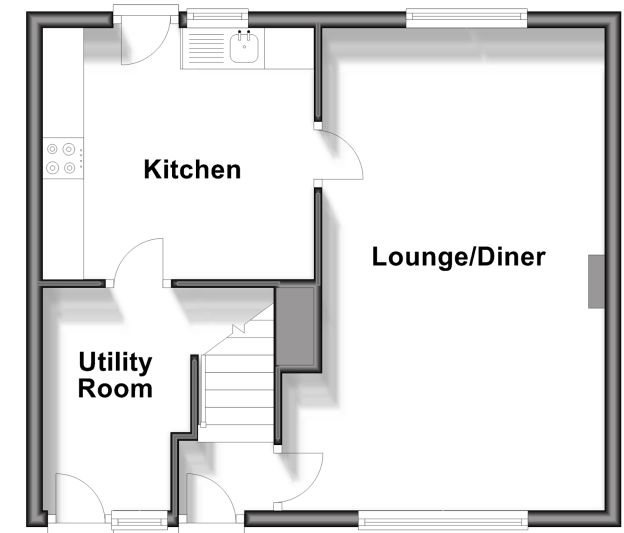
OUTSIDE

Rear Garden

Front Garden

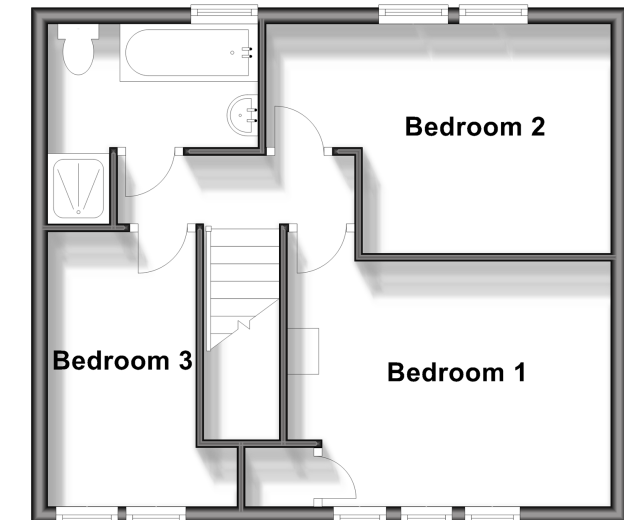
Ground Floor

Approx. 40.6 sq. metres (437.0 sq. feet)



First Floor

Approx. 40.5 sq. metres (436.4 sq. feet)



Call Maidstone - 01622 683737 ■ wardsofkent.co.uk

- Legal advice should be taken to verify fixtures/fittings, planning, alterations and/or lease details
- Appliances & services are untested, dimensions are approximate and floor plans are not to scale



13157301/20240406/CV/LB01