



OVER 60?

Secure this property
for up to **59% less!**

Price

£250,000

Freehold

2x  1x  2x 

**Milton Street,
Maidstone, Kent ME16**



Video Tour available

Wards

Helping you move forwards



Main features

- A bay front Victorian house
- Large rear garden, a great outdoor space
- Versatile basement, could be used as a room of your choice
- No onward chain
- Bedroom 1 having a walk through dressing/shower room

Accommodation

GROUND FLOOR

Hallway

Lounge: 12'4 x 12'2 (3.76m x 3.71m)

Dining Room: 12'5 x 11'9 (3.79m x 3.58m)

Kitchen: 14'8 x 6'9 (4.47m x 2.06m)

BASEMENT

Cellar Room: 12'2 x 11'9 (3.71m x 3.58m)

FIRST FLOOR

Bedroom 1: 12'5 x 12'2 (3.79m x 3.71m)

Dressing Room: 9'4 x 6'8 (2.85m x 2.03m)

Shower Room

Bedroom 2: 12'4 x 11'9 (3.76m x 3.58m)

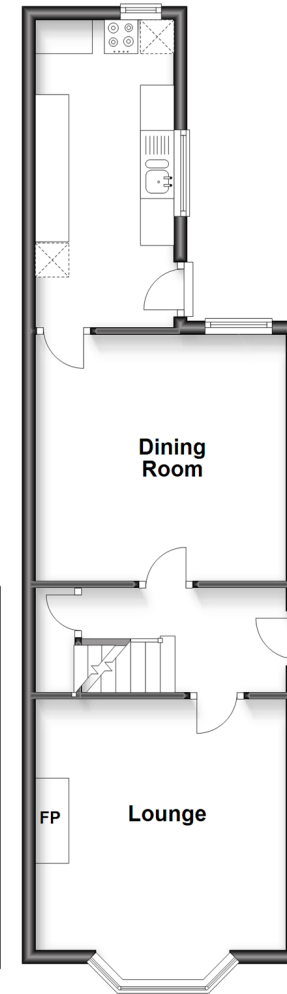
OUTSIDE

Rear Garden

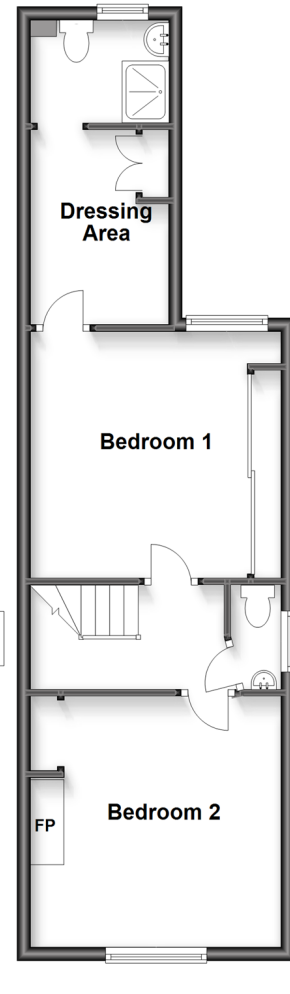
Front Garden

Off Road Parking

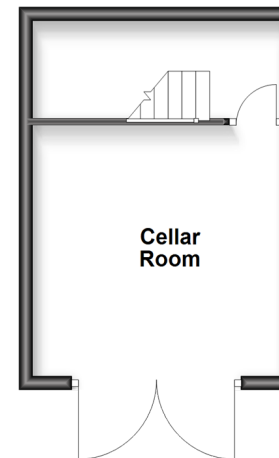
Ground Floor
Approx. 43.7 sq. metres (470.1 sq. feet)



First Floor
Approx. 43.3 sq. metres (466.3 sq. feet)



Basement
Approx. 19.5 sq. metres (210.2 sq. feet)



Call Maidstone - 01622 683737 ■ wardsofkent.co.uk

- Legal advice should be taken to verify fixtures/fittings, planning, alterations and/or lease details
- Appliances & services are untested, dimensions are approximate and floor plans are not to scale
- Through a Homewise Home For Life Plan people aged 60+ can secure this property for up to 59% less, by purchasing a Lifetime Lease.



13157305/20231019/CV/DS