



Price
£99,000

Leasehold

1x  1x  1x 

**Ashford Road,
Maidstone, Kent ME14**

OVER 60?

Secure this property
for up to **59% less!**

Wards
Helping you move forwards



Main features

- Lower-ground floor garden flat
- No forward chain
- Ideal first time buy or buy to let investment
- Well presented with attractive kitchen and shower room
- Walking distance of a choice of rail stations and the shops

Accommodation

LOWER-GROUND FLOOR

Lounge: 11'0 x 8'3 (3.36m x 2.52m)

Kitchen: 7'3 x 6'3 (2.21m x 1.91m)

Bedroom: 10'8 x 8'0 (3.25m x 2.44m)

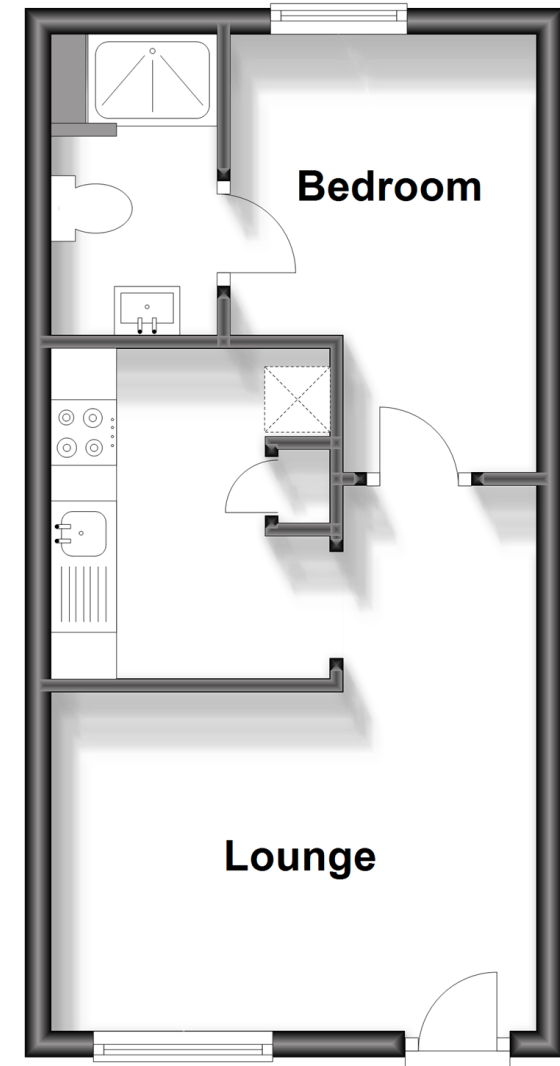
Shower Room: 7'5 x 3'6 (2.26m x 1.07m)

OUTSIDE

Communal Garden

Lower Ground Floor

Approx. 28.2 sq. metres (303.1 sq. feet)



Call Maidstone - 01622 683737 ■ wardsofkent.co.uk

- Legal advice should be taken to verify fixtures/fittings, planning, alterations and/or lease details
- Appliances & services are untested, dimensions are approximate and floor plans are not to scale
- Through a Homewise Home For Life Plan people aged 60+ can secure this property for up to 59% less, by purchasing a Lifetime Lease.



13157464/20230811/CV/MB