



**Price**  
**£300,000**

**Freehold**

3x  1x  1x 

**Bedgebury Close,  
Maidstone, Kent ME14**

**OVER 60?**

Secure this property  
for up to **59% less!**

*Wards*  
Helping you move forwards





## Main features

- Attractive family house in a great location
- Extended to the rear
- No forward chain
- Garage en-bloc to the rear
- Close to popular schools, easy access to the motorways, walking distance to the station and town centre

## Accommodation

### GROUND FLOOR

Porch  
Entrance Lobby  
Lounge/Diner: 25'1 x 12'7 (7.65m x 3.84m)  
Garden Room: 14'2 x 7'2 (4.32m x 2.19m)  
Kitchen: 9'7 x 7'7 (2.92m x 2.31m)

### FIRST FLOOR

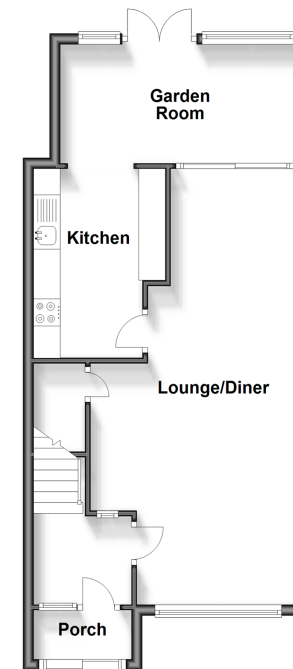
Landing  
Bedroom 1: 12'5 x 9'6 (3.79m x 2.90m)  
Bedroom 2: 9'7 x 9'5 (2.92m x 2.87m)  
Bedroom 3: 9'5 x 6'3 (2.87m x 1.91m)

### OUTSIDE

Rear Garden  
Front Garden  
Garage En-Bloc

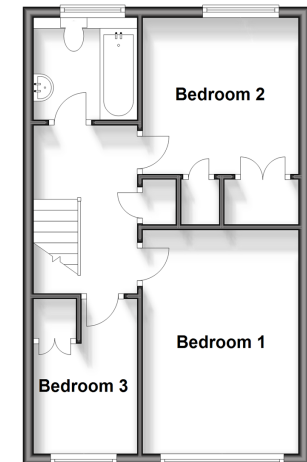
### Ground Floor

Approx. 52.3 sq. metres (562.5 sq. feet)



### First Floor

Approx. 40.1 sq. metres (431.8 sq. feet)



**Call Maidstone - 01622 683737 ■ [wardsofkent.co.uk](http://wardsofkent.co.uk)**

■ Legal advice should be taken to verify fixtures/fittings, planning, alterations and/or lease details  
■ Through a Homewise Home For Life Plan people aged 60+ can secure this property for up to 59% less, by purchasing a Lifetime Lease.

■ Appliances & services are untested, dimensions are approximate and floor plans are not to scale



13157509/20240427/CV/MB