



Price
£425,000

Freehold

3x  1x  2x 

**Willow Way, Maidstone,
Kent ME15**

OVER 60?

Secure this property
for up to **59% less!**

Wards
Helping you move forwards



Main features

- Beautifully presented house
- Set on one of Maidstone's sought-after roads
- A fantastic fusion of traditional and modern features throughout
- Well maintained and spacious rear garden with patio area
- Potential to extend (subject to planning permission)

Accommodation

GROUND FLOOR

Hallway

Lounge: 14'0 x 12'0 (4.27m x 3.66m)

Dining Area: 10'0 x 9'0 (3.05m x 2.75m)

Kitchen: 11'0 x 7'10 (3.36m x 2.39m)

FIRST FLOOR

Landing

Bedroom 1: 14'0 x 9'10 up to fitted wardrobes (4.27m x 3.00m)

Bedroom 2: 10'11 x 9'0 (3.33m x 2.75m)

Bedroom 3: 9'0 x 8'0 (2.75m x 2.44m)

Toilet

Bathroom

OUTSIDE

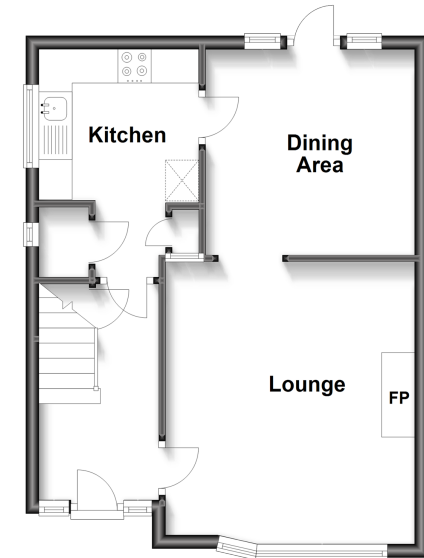
Rear Garden

Front Garden

Off Road Parking

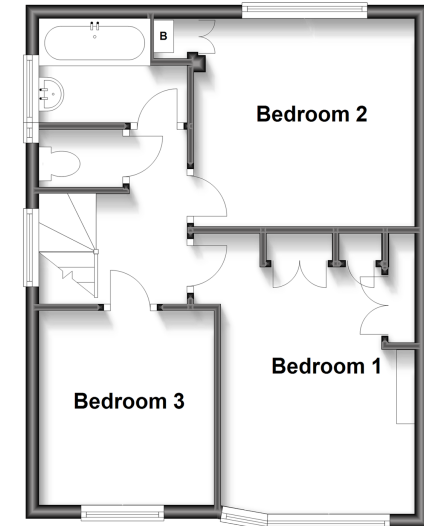
Ground Floor

Approx. 40.1 sq. metres (431.2 sq. feet)



First Floor

Approx. 41.0 sq. metres (441.6 sq. feet)



Call Maidstone - 01622 683737 ■ wardsofkent.co.uk

- Legal advice should be taken to verify fixtures/fittings, planning, alterations and/or lease details
- Appliances & services are untested, dimensions are approximate and floor plans are not to scale
- Through a Homewise Home For Life Plan people aged 60+ can secure this property for up to 59% less, by purchasing a Lifetime Lease.



13157517/20230429/CV/HS1