



Price
£400,000

Freehold

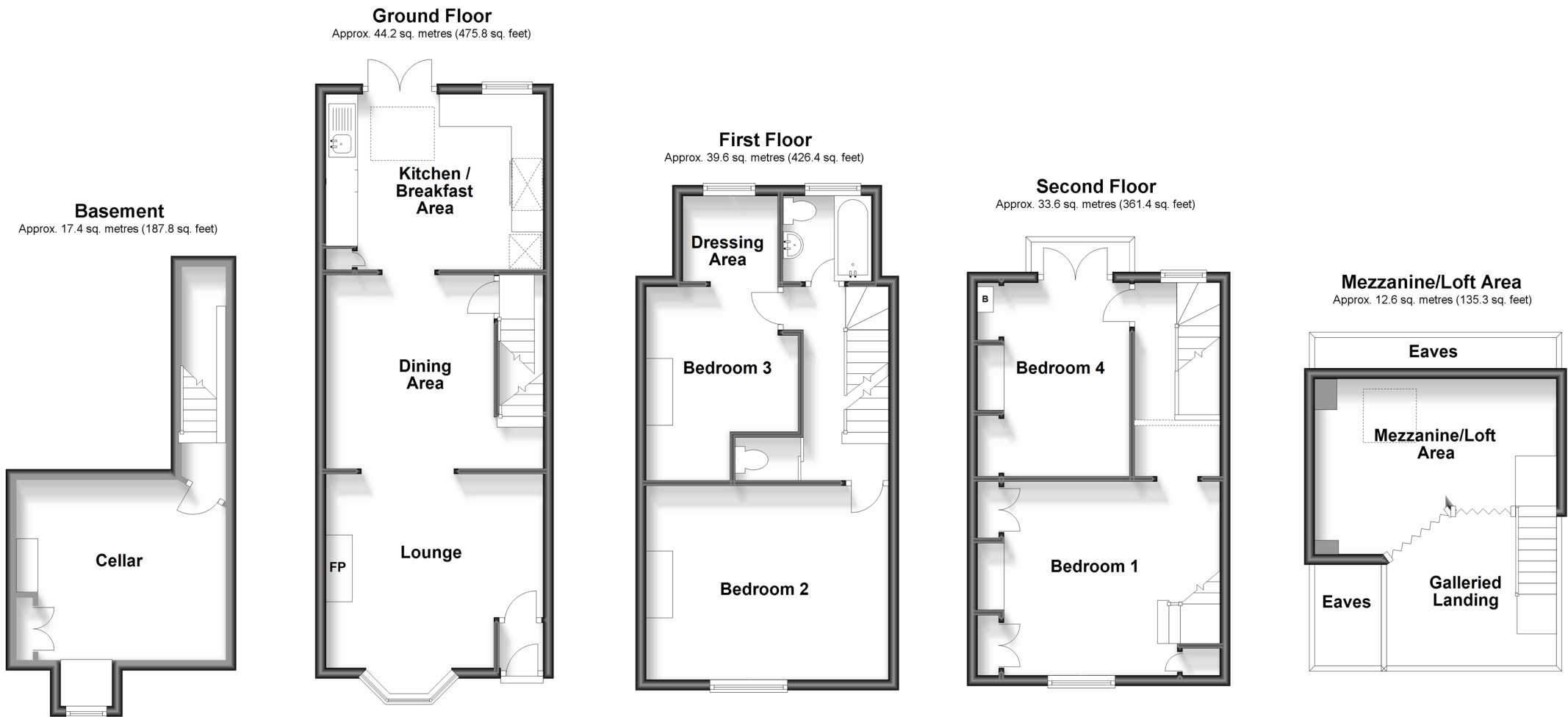
4x  1x  2x 

**Randall Street,
Maidstone, Kent ME14**

OVER 60?

Secure this property
for up to **59% less!**

Wards
Helping you move forwards



Accommodation

GROUND FLOOR

Porch
Lounge: 14'0 x 13'5 (4.27m x 4.09m)
Dining Area: 13'11 x 11'8 (4.24m x 3.56m)
Kitchen/Breakfast Area: 12'3 x 11'5 (3.74m x 3.48m)

BASEMENT

Cellar: 14'1 x 12'9 (4.30m x 3.89m)

FIRST FLOOR

Landing
Bedroom 2: 15'0 x 11'7 (4.58m x 3.53m)
Bedroom 3: 11'7 x 9'3 (3.53m x 2.82m)
Dressing Area
Bathroom

SECOND FLOOR

Bedroom 1: 15'1 x 11'8 (4.60m x 3.56m)
Bedroom 4: 12'2 x 9'3 (3.71m x 2.82m)

MEZZANINE/LOFT AREA

Galleried Landing
Mezzanine /Loft Area: 15'0 x 9'8 (4.58m x 2.95m)

OUTSIDE

Rear Garden
Workshop
Front Garden



Main features

- Impressive Victorian house laid out over 5 floors
- Unique interior design plus useful brick built workshop
- Mezzanine style chillout room in loft area plus a bar in the basement
- Extended to rear with balcony and excellent kitchen
- Town centre location, short walk from Maidstone East station



Nearest Schools

Primary Schools: North Borough Junior School 0.3 miles, East Borough Primary 0.8 miles, Sandling Primary 1.0 miles

Secondary Schools: Invicta Grammar School 0.9 miles



Transport Information

Train Stations: Maidstone East 0.4 miles, Maidstone West 1.0 miles, Maidstone Barracks 1.3 miles



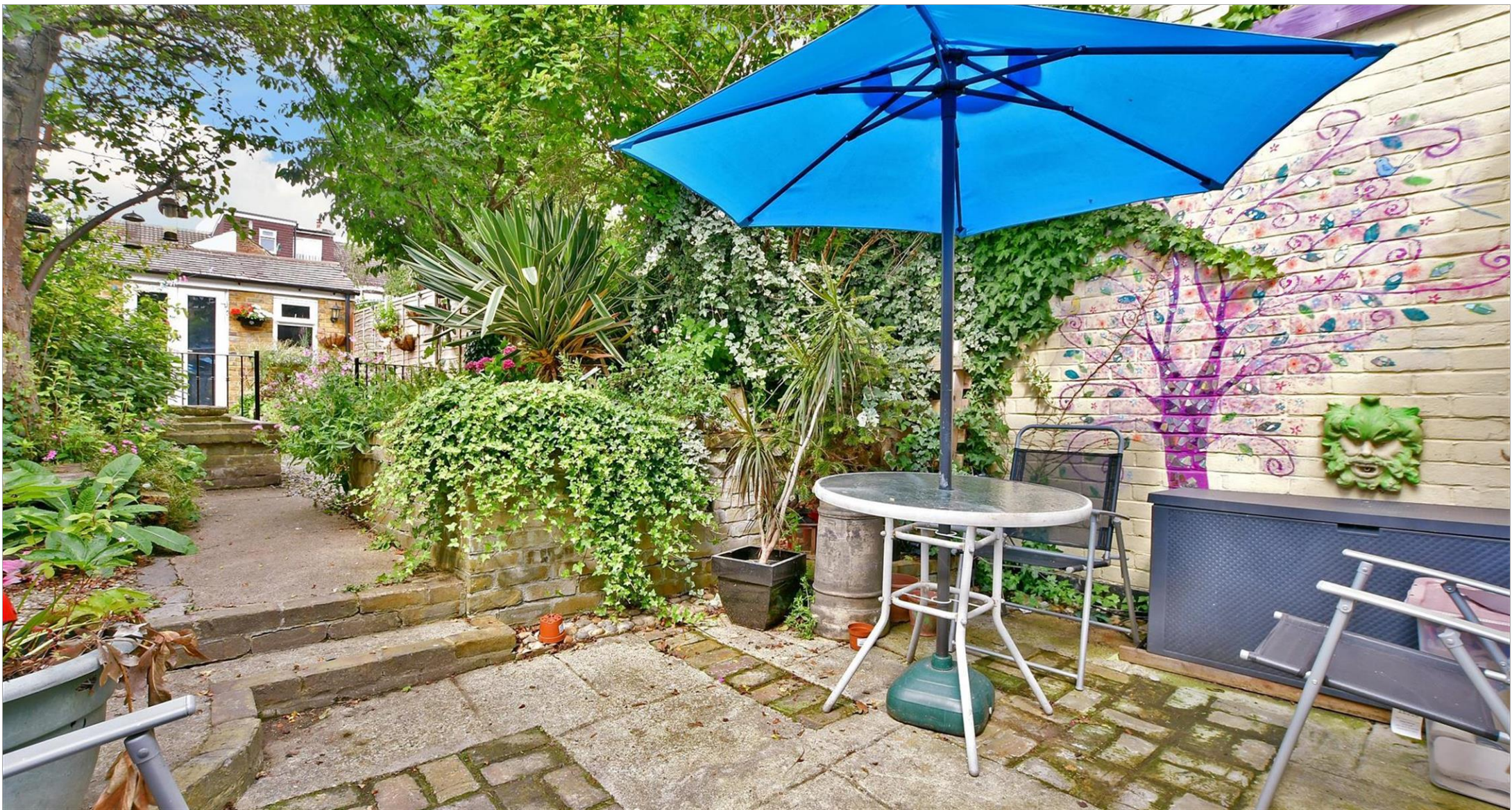
Address

Randall Street, Maidstone, Kent ME14



Directions

For directions to this property please contact us.



Wards
Helping you move forwards

Call Maidstone Branch 01622 683737 ■ wardsofkent.co.uk



■ Legal advice should be taken to verify fixtures/fittings, planning, alterations and/or lease details ■ Appliances & services are untested, dimensions are approximate and floor plans are not to scale
■ Through a Homewise Home For Life Plan people aged 60+ can secure this property for up to 59% less, by purchasing a Lifetime Lease.



13157567/20231213/CV/MB