

OVER 60?

Secure this property
for up to **59% less!**



Price

£1,150,000

Freehold

6x  4x  5x 

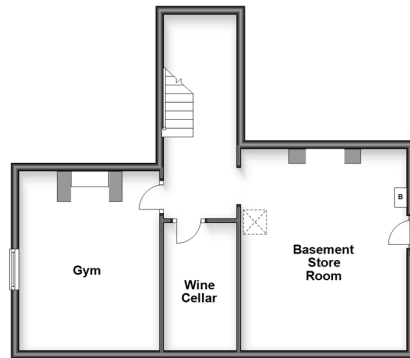
Boxley Road, Maidstone, Kent ME14

Wards
Helping you move forwards

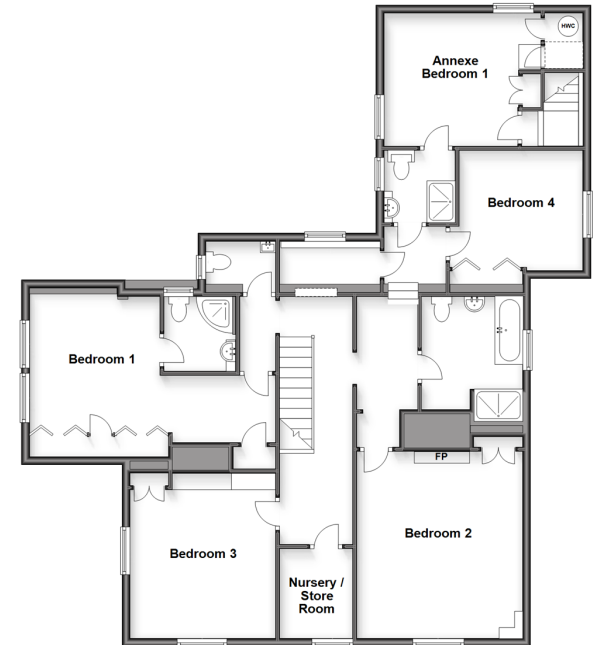
Split Level Ground Floor
Approx. 187.6 sq. metres (2019.2 sq. feet)



Basement
Approx. 51.0 sq. metres (549.0 sq. feet)



Split Level First Floor
Approx. 130.6 sq. metres (1405.3 sq. feet)



Accommodation

SPLIT-LEVEL GROUND FLOOR

Entrance Lobby
Entrance Hall
Lounge: 16'0 x 13'4 (4.88m x 4.07m)
Dining Room : 13'3 x 11'6 (4.04m x 3.51m)
Study: 13'5 x 10'2 (4.09m x 3.10m)
Sitting Room: 20'0 x 12'9 (6.10m x 3.89m)
Kitchen: 23'2 x 10'3 (7.07m x 3.13m)
Utility Room: 9'7 x 5'9 (2.92m x 1.75m)
Cloakroom

BASEMENT

Hallway
Gym: 14'4 x 11'4 (4.37m x 3.46m)
Basement Store Room: 16'1 x 13'0 (4.91m x 3.97m)
Wine Cellar: 10'2 x 6'2 (3.10m x 1.88m)

SPLIT-LEVEL FIRST FLOOR

Landing
Bedroom 1: 20'2 x 11'0 (6.15m x 3.36m)
En-Suite Shower Room
Bedroom 2: 16'3 x 13'6 (4.96m x 4.12m)
Bedroom 3: 13'3 x 12'2 (4.04m x 3.71m)
Bedroom 4: 10'9 x 9'7 (3.28m x 2.92m)
Bathroom
Shower Room
Cloakroom
Nursery/Store Room: 7'11 x 5'9 (2.41m x 1.75m)

ANNEX

GROUND FLOOR

Annex Kitchen/Breakfast Room: 10'0 x 9'1 (3.05m x 2.77m)
Annex Lounge/Diner: 15'7 x 10'9 (4.75m x 3.28m)
Annex Shower room
Annex Bedroom 2: 11'2 x 10'8 (3.41m x 3.25m)

FIRST FLOOR

Landing
Annex Bedroom 1: 12'7 x 10'7 (3.84m x 3.23m)

OUTSIDE

Gardens To Front, Side & Rear
Driveway
Garage: 17'6 x 9'0 (5.34m x 2.75m)



Main features

- Stunning Grade II listed extended character family house
- Attached annex, ideal for multi generational living
- Useful basement storage, wine cellar and a gym
- Character features including high ceilings, sash windows and various fireplaces as well as a wonderful Georgian style pillared entrance
- Town centre location



Nearest Schools

Primary Schools: North Borough Junior School 0.1 miles, Sandling Primary 0.5 miles, East Borough Primary 0.6 miles
Secondary Schools: Maidstone Grammar School for Girls 0.7 miles



Transport Information

Train Stations: Maidstone East 0.5 miles, Maidstone Barracks 0.7 miles, Maidstone West 1.0 miles



Address

Boxley Road, Maidstone, Kent ME14



Directions

For directions to this property please contact us.



Wards
Helping you move forwards

Call Maidstone Branch 01622 683737 ■ wardsofkent.co.uk



- Legal advice should be taken to verify fixtures/fittings, planning, alterations and/or lease details
- Appliances & services are untested, dimensions are approximate and floor plans are not to scale
- Through a Homewise Home For Life Plan people aged 60+ can secure this property for up to 59% less, by purchasing a Lifetime Lease.



13157572/20230612/CV/MB