



**Price**  
**£325,000**

**Freehold**

3x  1x  1x 

**Woodbridge Drive,  
Maidstone, Kent ME15**

**OVER 60?**

Secure this property  
for up to **59% less!**

*Wards*  
Helping you move forwards





## Main features

- Set in a quiet cul-de-sac on the outskirts of the town centre
- Open plan lounge/dining room with separate modern kitchen
- Integral garage for storage
- Walking distance to Maidstone East Station and local amenities
- In an ideal area for schooling, with a range of primary and secondary schools

## Accommodation

### GROUND FLOOR

Entrance Porch  
Cloakroom  
Lounge/Dining Area: 13'7 x 13'4 (4.14m x 4.07m)  
Conservatory Area: 7'2 x 5'9 (2.19m x 1.75m)  
Kitchen: 12'3 x 6'6 (3.74m x 1.98m)

### FIRST FLOOR

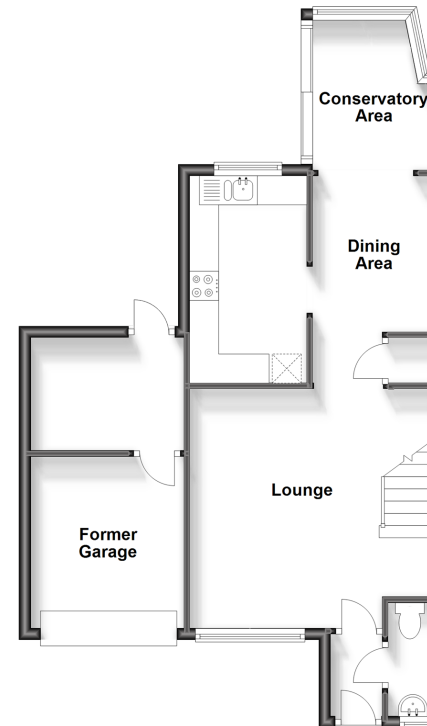
Landing  
Bedroom 1: 13'7 x 9'0 (4.14m x 2.75m)  
Bedroom 2: 11'5 x 7'6 (3.48m x 2.29m)  
Bedroom 3: 9'3 x 5'7 (2.82m x 1.70m)  
Bathroom: 8'7 x 7'9 (2.62m x 2.36m)

### OUTSIDE

Rear Garden  
Front Garden  
Shared Driveway  
Former Garage

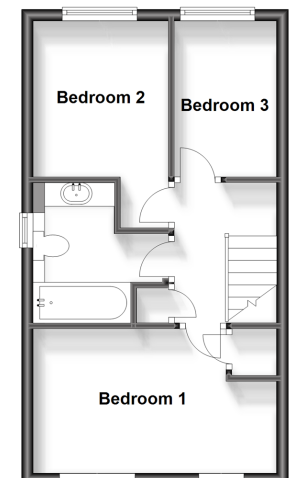
### Ground Floor

Approx. 54.0 sq. metres (581.0 sq. feet)



### First Floor

Approx. 32.7 sq. metres (351.6 sq. feet)



**Call Maidstone - 01622 683737 ■ [wardsofkent.co.uk](http://wardsofkent.co.uk)**

■ Legal advice should be taken to verify fixtures/fittings, planning, alterations and/or lease details  
■ Through a Homewise Home For Life Plan people aged 60+ can secure this property for up to 59% less, by purchasing a Lifetime Lease.

■ Appliances & services are untested, dimensions are approximate and floor plans are not to scale