



Price
£250,000

Freehold

2x  1x  2x 

**Peel Street, Maidstone,
Kent ME14**

OVER 60?

Secure this property
for up to **59% less!**

Wards
Helping you move forwards



Main features

- Attractive Victorian house in a prime town centre location
- Separate upstairs bathroom
- Ideal for access to the motorway, the shops and the station
- No forward chain
- Close to schools and amenities

Accommodation

GROUND FLOOR

Hallway

Lounge: 10'9 x 9'4 (3.28m x 2.85m)

Dining Room: 13'1 x 10'9 (3.99m x 3.28m)

Kitchen

BASEMENT

Cellar

FIRST FLOOR

Landing

Bedroom 1: 17'9 x 10'9 (5.41m x 3.28m)

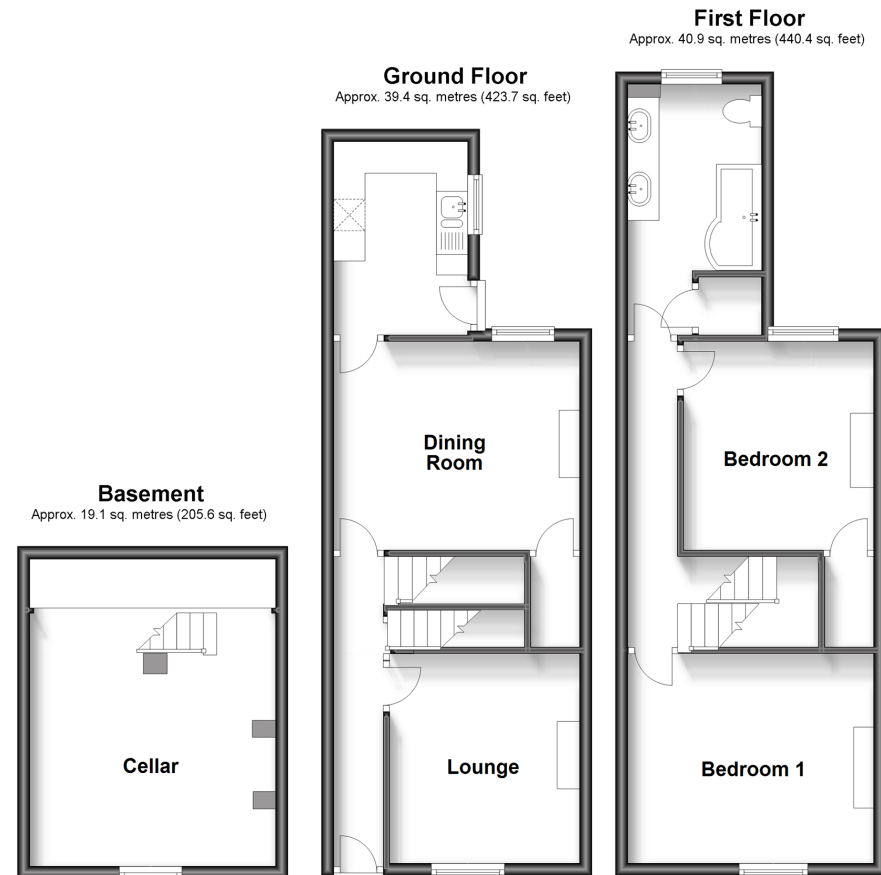
Bedroom 2: 11'0 x 10'0 (3.36m x 3.05m)

Bathroom

OUTSIDE

Rear Garden

Front Garden



Call Maidstone - 01622 683737 ■ wardsofkent.co.uk

- Legal advice should be taken to verify fixtures/fittings, planning, alterations and/or lease details
- Appliances & services are untested, dimensions are approximate and floor plans are not to scale
- Through a Homewise Home For Life Plan people aged 60+ can secure this property for up to 59% less, by purchasing a Lifetime Lease.



13157612/20230913/JH/MB