



OVER 60?

Secure this property
for up to **59% less!**

Price

£360,000

Freehold

3x  1x  1x 

**Wolfe Road, Maidstone,
Kent ME16**

Wards
Helping you move forwards



Main features

- Fantastic family home located in a quiet cul-de-sac
- Open plan kitchen/diner with patio doors leading to the rear garden
- Plenty of parking on the paved driveway and access to the garage
- Generous sized rear garden
- Great location within walking distance to local shops

Accommodation

GROUND FLOOR

Porch
Hallway
Cloakroom
Lounge: 13'5 x 12'4 (4.09m x 3.76m)
Kitchen/Diner: 18'0 x 9'0 (5.49m x 2.75m)

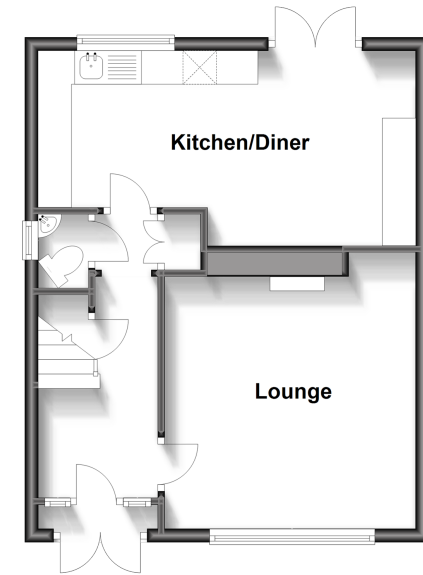
FIRST FLOOR

Landing
Bedroom 1: 12'0 x 9'10 up to fitted wardrobes (3.66m x 3.00m)
Bedroom 2: 11'0 x 8'11 up to fitted wardrobes (3.36m x 2.72m)
Bedroom 3: 8'0 x 8'0 (2.44m x 2.44m)
Bathroom

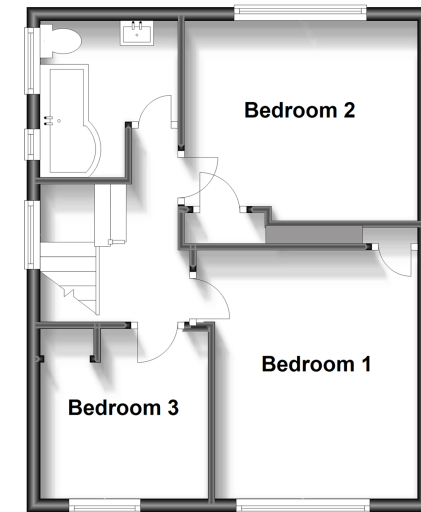
OUTSIDE

Front & Rear Gardens
Driveway
Garage

Ground Floor
Approx. 40.2 sq. metres (433.1 sq. feet)



First Floor
Approx. 40.5 sq. metres (436.3 sq. feet)



Call Maidstone - 01622 683737 ■ wardsofkent.co.uk

- Legal advice should be taken to verify fixtures/fittings, planning, alterations and/or lease details
- Appliances & services are untested, dimensions are approximate and floor plans are not to scale
- Through a Homewise Home For Life Plan people aged 60+ can secure this property for up to 59% less, by purchasing a Lifetime Lease.



13157618/20230615/HS1/HS1