



OVER 60?

Secure this property
for up to **59% less!**

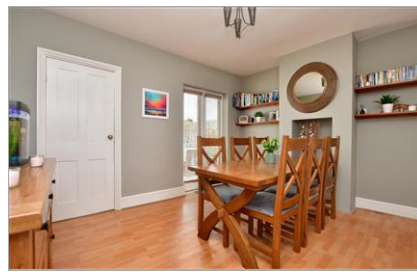
Guide Price
£290,000

Freehold

3x  1x  2x 

**Perryfield Street,
Maidstone, Ken ME14**

Wards
Helping you move forwards



Main features

- Beautifully presented house conveniently located in the town centre
- Thoughtfully laid-out with the kitchen on the lower ground floor creating 2 living rooms upstairs
- Bedroom 2 benefiting from having an interconnecting bedroom/study/nursery
- Landscaped rear garden offering a quiet retreat for those sunny summer days
- Located within walking distance of train stations and the town whilst being just a short drive to the M2 and M20 motorways

Accommodation

GROUND FLOOR

Lounge: 12'9 x 11'1 (3.89m x 3.38m)
Dining Room: 12'10 x 10'10 (3.91m x 3.30m)
Bathroom

BASEMENT

Kitchen: 12'0 x 11'10 (3.66m x 3.61m)

SPLIT LEVEL FIRST FLOOR

Landing
Bedroom 1: 14'7 x 11'0 up to fitted wardrobes (4.45m x 3.36m)
Bedroom 2: 17'7 x 11'0 (5.36m x 3.36m)
Bedroom 3/Study: 9'5 x 6'11 (2.87m x 2.11m)

OUTSIDE

Rear Garden
Small Front Garden

Ground Floor

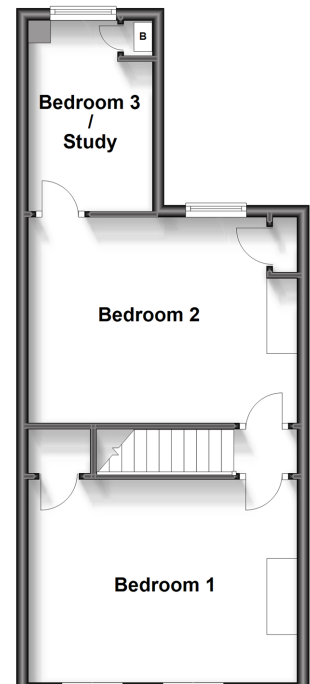
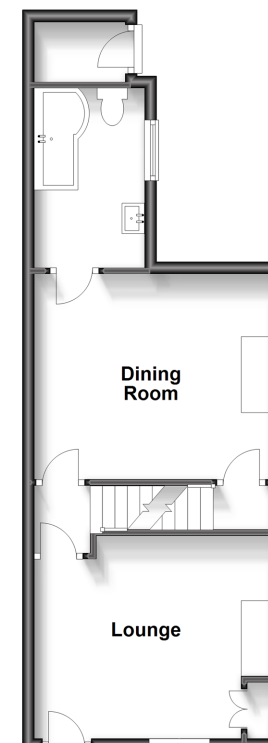
Approx. 37.2 sq. metres (400.7 sq. feet)

Split Level First Floor

Approx. 40.5 sq. metres (436.0 sq. feet)

Basement

Approx. 14.0 sq. metres (150.6 sq. feet)



Call Maidstone - 01622 683737 ■ wardsofkent.co.uk

■ Legal advice should be taken to verify fixtures/fittings, planning, alterations and/or lease details
■ Through a Homewise Home For Life Plan people aged 60+ can secure this property for up to 59% less, by purchasing a Lifetime Lease.

■ Appliances & services are untested, dimensions are approximate and floor plans are not to scale



13157619/20230708/CV/HS1