



Price
£250,000

Freehold

3x  1x  1x 

**Perryfield Street,
Maidstone, Kent ME14**

OVER 60?

Secure this property
for up to **59% less!**

Wards
Helping you move forwards



Main features

- Attractive Victorian style period house
- No forward chain
- Town centre location, ideal for Maidstone East station
- Useful basement
- Close to good schools, and the town centre

Accommodation

GROUND FLOOR

Porch

Lounge: 11'3 x 11'2 (3.43m x 3.41m)

Kitchen: 11'5 x 11'2 (3.48m x 3.41m)

BASEMENT

Cellar 1: 16'1 x 10'3 (4.91m x 3.13m)

Cellar 2: 14'3 x 10'4 (4.35m x 3.15m)

FIRST FLOOR

Landing

Bedroom 1: 11'7 x 11'2 (3.53m x 3.41m)

Bathroom: 10'2 x 8'7 (3.10m x 2.62m)

SECOND FLOOR

Landing

Bedroom 2: 11'2 x 10'0 (3.41m x 3.05m)

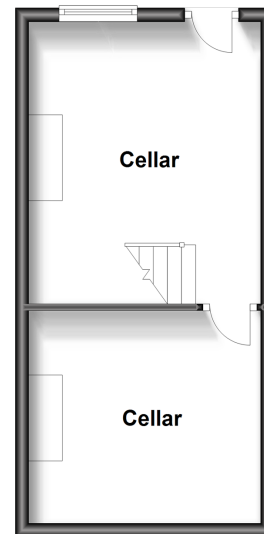
Bedroom 3: 11'1 x 11'1 (3.38m x 3.38m)

OUTSIDE

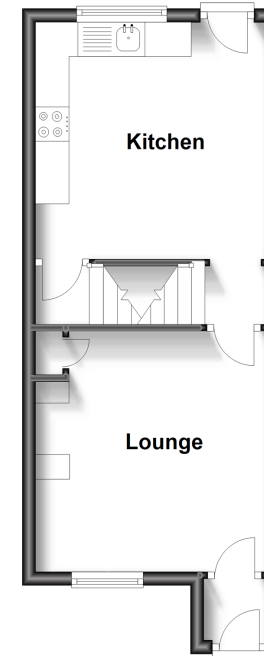
Rear Garden

Small Front Garden

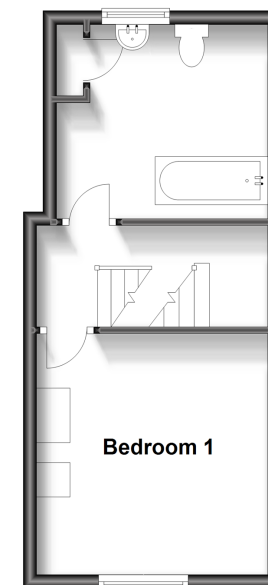
Basement
Approx. 25.2 sq. metres (270.9 sq. feet)



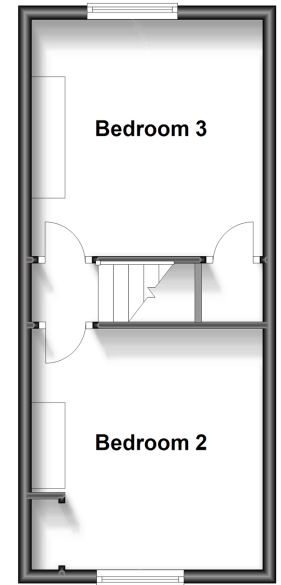
Ground Floor
Approx. 28.5 sq. metres (307.2 sq. feet)



First Floor
Approx. 26.7 sq. metres (287.8 sq. feet)



Second Floor
Approx. 27.6 sq. metres (297.1 sq. feet)



Call Maidstone - 01622 683737 ■ wardsofkent.co.uk

■ Legal advice should be taken to verify fixtures/fittings, planning, alterations and/or lease details
■ Through a Homewise Home For Life Plan people aged 60+ can secure this property for up to 59% less, by purchasing a Lifetime Lease.

■ Appliances & services are untested, dimensions are approximate and floor plans are not to scale



13157622/20230727/JG/CF