



OVER 60?

Secure this property
for up to **59% less!**

Price
£310,000

Freehold

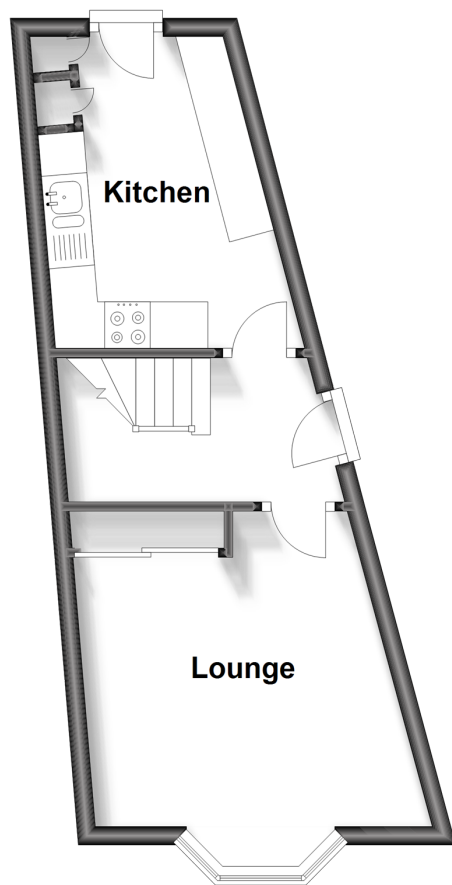
3x  1x  1x 

Upper Fant Road,
Barming, Maidstone,
Kent ME16

Wards
Helping you move forwards

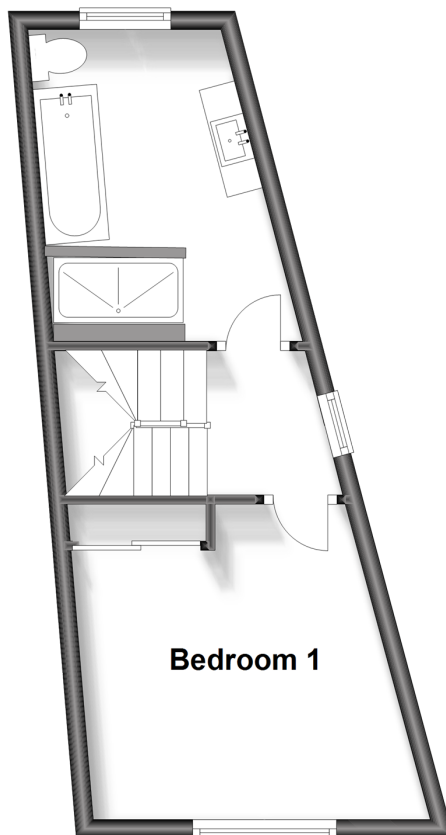
Ground Floor

Approx. 24.9 sq. metres (268.1 sq. feet)



First Floor

Approx. 24.7 sq. metres (266.2 sq. feet)



Second Floor

Approx. 24.8 sq. metres (267.5 sq. feet)



Accommodation

GROUND FLOOR

Side Entrance

Hallway

Lounge: 14'2 x 10'2 (4.32m x 3.10m)

Kitchen: 12'0 x 9'7 (3.66m x 2.92m)

FIRST FLOOR

Landing

Bedroom 1: 12'5 x 11'0 (3.79m x 3.36m)

Bathroom: 11'0 x 8'6 (3.36m x 2.59m)

SECOND FLOOR

Landing

Bedroom 2: 12'0 x 11'0 (3.66m x 3.36m)

Bedroom 3: 11'0 x 9'0 (3.36m x 2.75m)

OUTSIDE

Rear Garden

Driveway



Main features

- Recently built family home
- No chain
- Electric car charging point, extremely energy efficient
- Quiet yet convenient location, ideal for schools and access to amenities
- New build warranty still in effect.



Nearest Schools

Primary Schools: St Michael's C of E Junior School 0.3 miles, West Borough 0.8 miles, Brunswick House 1.2 miles
Secondary Schools: Oakwood Park Grammar School 0.7 miles, St Augustine Ac 0.7 miles, St Simon Stock Catholi 0.7 miles



Transport Information

Train Stations: Maidstone West 0.8 miles, Maidstone Barracks 1.3 miles, Maidstone East 1.4 miles, East Farleigh 1.4 miles



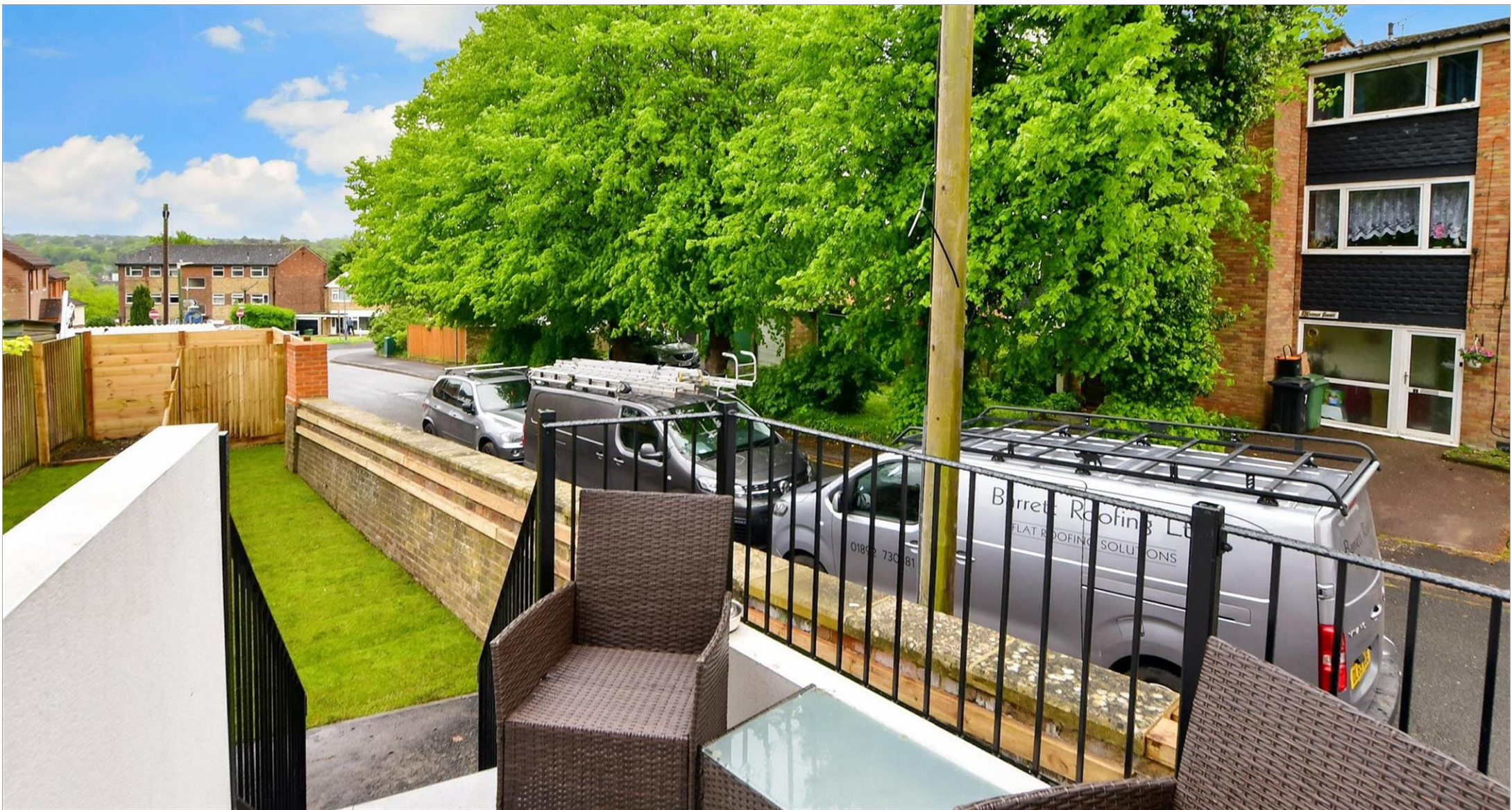
Address

Upper Fant Road, Barming, Maidstone, Kent ME16



Directions

For directions to this property please contact us.



Wards
Helping you move forwards

Call Maidstone Branch 01622 683737 ■ wardsof Kent.co.uk



- Legal advice should be taken to verify fixtures/fittings, planning, alterations and/or lease details
- Appliances & services are untested, dimensions are approximate and floor plans are not to scale
- Through a Homewise Home For Life Plan people aged 60+ can secure this property for up to 59% less, by purchasing a Lifetime Lease.



13157634/20240508/MB/MB