



**Price**  
**£270,000**

**Freehold**

3x  1x  1x 

**Fant Lane, Maidstone,  
Kent ME16**

**OVER 60?**

Secure this property  
for up to **59% less!**

*Wards*  
Helping you move forwards





### Ground Floor

Approx. 37.6 sq. metres (405.1 sq. feet)

## Main features

- A deceptively spacious house with no forward chain
- Lovely rear garden with useful outbuilding
- Off road parking
- Convenient location, ideal for shops, stations, the hospital and other amenities
- Ideal first time buy or investment

## Accommodation

### GROUND FLOOR

Kitchen: 13'3 x 10'4 (4.04m x 3.15m)

Lounge: 12'7 x 11'5 (3.84m x 3.48m)

Bathroom: 7'9 x 5'9 (2.36m x 1.75m)

### FIRST FLOOR

Landing

Bedroom 1: 12'7 x 11'1 (3.84m x 3.38m)

Bedroom 2: 10'8 x 7'2 (3.25m x 2.19m)

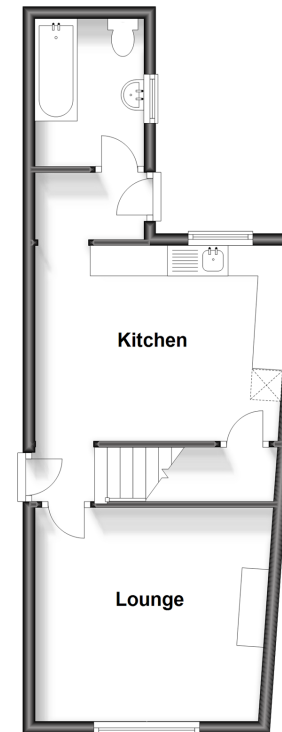
Bedroom 3: 7'3 x 6'5 (2.21m x 1.96m)

### OUTSIDE

Rear Garden

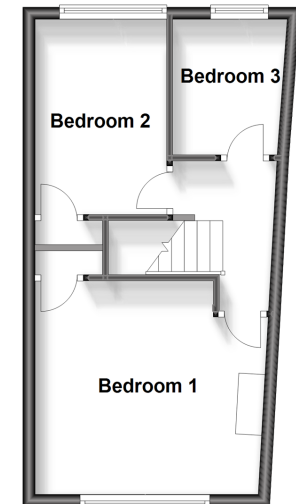
Front Garden

Driveway



### First Floor

Approx. 30.7 sq. metres (330.6 sq. feet)



**Call Maidstone - 01622 683737 ■ [wardsofkent.co.uk](http://wardsofkent.co.uk)**

■ Legal advice should be taken to verify fixtures/fittings, planning, alterations and/or lease details  
 ■ Through a Homewise Home For Life Plan people aged 60+ can secure this property for up to 59% less, by purchasing a Lifetime Lease.

■ Appliances & services are untested, dimensions are approximate and floor plans are not to scale



13157649/20231213/CV/CF