



**Guide Price**  
**£325,000**

**Freehold**

3x  1x  1x 

**Gleneagles Drive,  
Maidstone, Kent ME15**

**OVER 60?**

Secure this property  
for up to **59% less!**

*Wards*  
Helping you move forwards





## Main features

- Mock Tudor style house in a peaceful yet convenient location
- Walking distance of the town centre and Maidstone East station
- Recently updated with recently installed windows creating a bright and airy interior
- Driveway for 2 cars plus integral garage, downstairs cloakroom
- Cul-de-sac position, very close to a picturesque nature reserve

## Accommodation

### GROUND FLOOR

Hallway  
Cloakroom  
Kitchen: 12'6 x 5'10 (3.81m x 1.78m)  
Lounge: 12'7 x 11'7 (3.84m x 3.53m)

### FIRST FLOOR

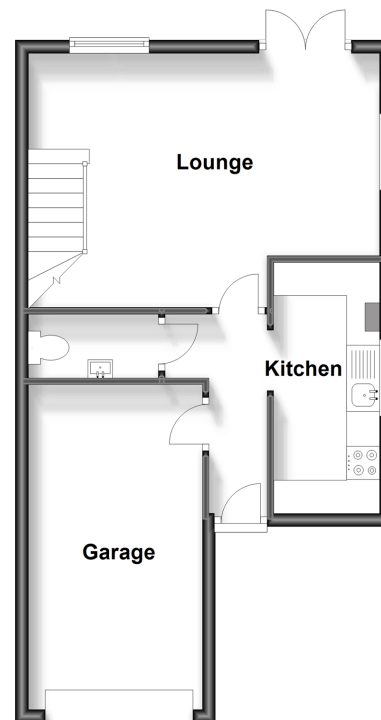
Landing  
Bedroom 1: 12'7 x 10'0 (3.84m x 3.05m)  
Bedroom 2: 9'6 x 7'7 (2.90m x 2.31m)  
Bedroom 3: 9'5 x 9'4 (2.87m x 2.85m)  
Bathroom : 6'5 x 5'7 (1.96m x 1.70m)

### OUTSIDE

Rear Garden  
Front Garden  
Driveway  
Garage

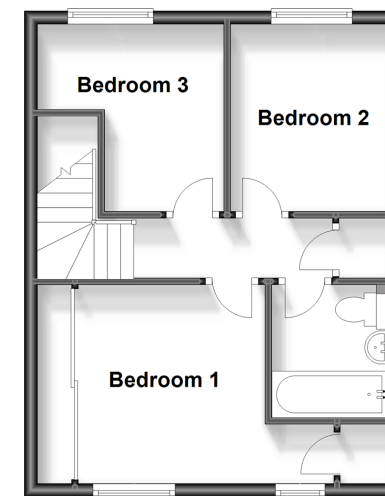
### Ground Floor

Approx. 44.7 sq. metres (480.9 sq. feet)



### First Floor

Approx. 36.9 sq. metres (397.0 sq. feet)



**Call Maidstone - 01622 683737 ■ [wardsofkent.co.uk](http://wardsofkent.co.uk)**

■ Legal advice should be taken to verify fixtures/fittings, planning, alterations and/or lease details  
■ Through a Homewise Home For Life Plan people aged 60+ can secure this property for up to 59% less, by purchasing a Lifetime Lease.

■ Appliances & services are untested, dimensions are approximate and floor plans are not to scale