



Price
£325,000

Freehold

3x  1x  1x 

**Hayle Road, Maidstone,
Kent ME15**

OVER 60?

Secure this property
for up to **59% less!**

Wards
Helping you move forwards



Main features

- **Unique and attractive home offered in good condition Plenty of potential to extend (subject to planning permission)**
- **Offered chain free**
- **Driveway for parking multiple vehicles**
- **Benefitting from a large, private, rear garden with outbuildings**
- **Central location within easy access to the town centre, schools and transport links**

Accommodation

GROUND FLOOR

Hallway

Lounge: 13'0 x 10'0 (3.97m x 3.05m)

Kitchen: 13'0 x 8'0 (3.97m x 2.44m)

Conservatory: 11'0 x 8'0 (3.36m x 2.44m)

Bedroom 1: 12'0 x 10'0 (3.66m x 3.05m)

Bedroom 2: 11'0 x 10'0 (3.36m x 3.05m)

Bedroom 3: 9'0 x 8'0 (2.75m x 2.44m)

Bathroom

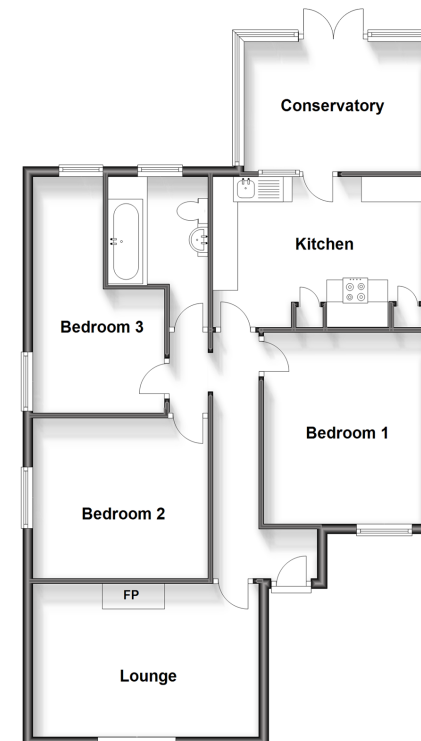
OUTSIDE

Rear Garden

Front Garden

Driveway

Ground Floor
Approx. 84.0 sq. metres (904.6 sq. feet)



Call Maidstone - 01622 683737 ■ wardsofkent.co.uk

■ Legal advice should be taken to verify fixtures/fittings, planning, alterations and/or lease details
 ■ Through a Homewise Home For Life Plan people aged 60+ can secure this property for up to 59% less, by purchasing a Lifetime Lease.

■ Appliances & services are untested, dimensions are approximate and floor plans are not to scale