



Price

£300,000

Leasehold

2x  1x  1x 

**Kings Lodge, King
Street, Maidstone, Kent
ME14**

Wards
Helping you move forwards



Main features

- **Luxury 1st floor retirement apartment in the heart of the town**
- **Open plan living/dining room area**
- **Modern fitted kitchen, shower room and cloakroom**
- **Residents parking via a gated entrance**
- **Communal lounge complete with a bar, chain free**

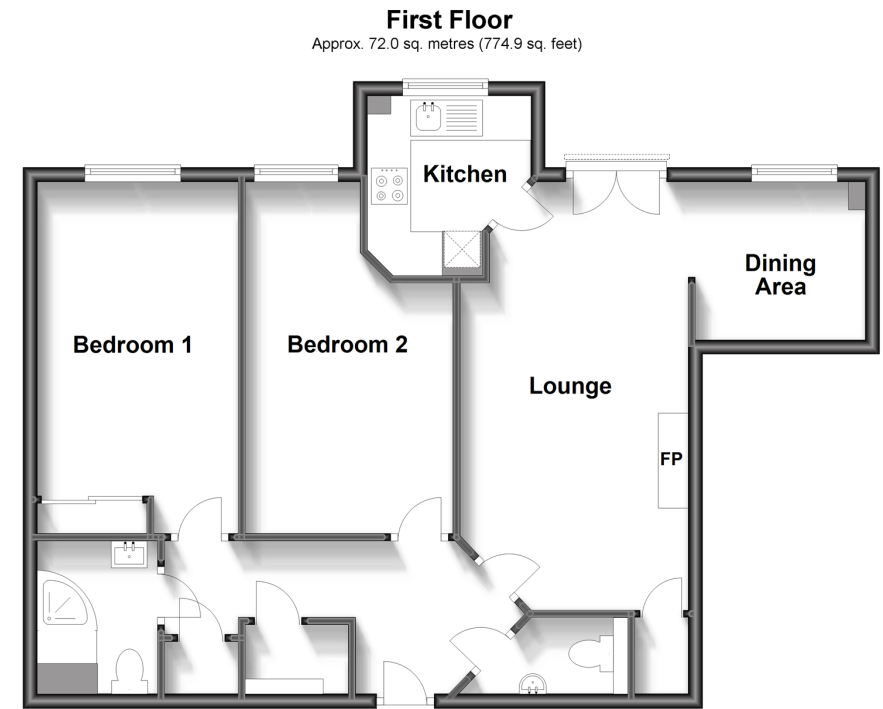
Accommodation

FIRST FLOOR

Hallway
 Cloakroom
 Lounge/Dining Area: 19'0 x 10'0 (5.80m x 3.05m) narrowing to 7'1 x 7'0 (2.16m x 2.14m)
 Kitchen: 7'11 x 7'0 (2.41m x 2.14m)
 Bedroom 1: 16'0 x 9'0 (4.88m x 2.75m)
 Bedroom 2: 16'0 x 9'0 (4.88m x 2.75m)
 Shower Room

OUTSIDE

Communal Grounds
 Allocated Parking



Call Maidstone - 01622 683737 ■ wardsofkent.co.uk

■ Legal advice should be taken to verify fixtures/fittings, planning, alterations and/or lease details

■ Appliances & services are untested, dimensions are approximate and floor plans are not to scale