



Price
£430,000

Freehold

4x  1x  2x 

**Littlebourne Road,
Maidstone, Kent ME14**

Wards
Helping you move forwards



Main features

- **Extended family house**
- **Conservatory overlooking the rear garden**
- **Very popular Vinters Park location, ideal for schools and transport links**
- **Walking distance from Maidstone East station and the town centre**
- **No forward chain**

Accommodation

GROUND FLOOR

Hallway
Cloakroom
Lounge: 16'2 x 11'8 (4.93m x 3.56m)
Dining Area: 9'3 x 9'0 (2.82m x 2.75m)
Conservatory: 10'6 x 10'1 (3.20m x 3.08m)
Kitchen: 10'1 x 9'3 (3.08m x 2.82m)
Breakfast Room: 11'6 x 11'2 (3.51m x 3.41m)

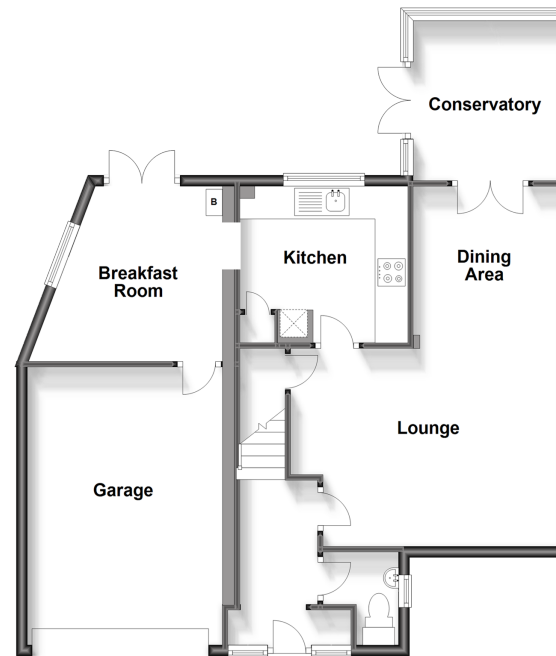
FIRST FLOOR

Landing
Bedroom 1: 13'5 x 11'2 (4.09m x 3.41m)
Bedroom 2: 13'5 x 10'3 (4.09m x 3.13m)
Bedroom 3: 8'6 x 7'6 (2.59m x 2.29m)
Bedroom 4: 11'6 x 11'3 (3.51m x 3.43m)
Bathroom: 6'3 x 5'5 (1.91m x 1.65m)

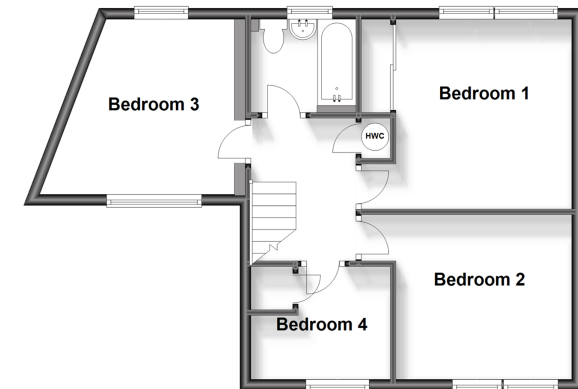
OUTSIDE

Rear Garden
Front Garden
Driveway
Integral Garage: 16'5 x 8'5 (5.01m x 2.57m)

Ground Floor
Approx. 82.5 sq. metres (887.9 sq. feet)



First Floor
Approx. 49.3 sq. metres (531.1 sq. feet)



Call Maidstone - 01622 683737 ■ wardsofkent.co.uk

■ Legal advice should be taken to verify fixtures/fittings, planning, alterations and/or lease details

■ Appliances & services are untested, dimensions are approximate and floor plans are not to scale

