



Guide Price
£144,000

Leasehold

1x  1x  1x 

**Romney Court, Romney
Place, Maidstone, Kent,
ME15**

OVER 60?

Secure this property
for up to **59% less!**

Wards
Helping you move forwards



Main features

- Immaculately presented ground floor apartment
- Town centre location, convenient for buses, shops and other amenities
- Offered in excellent condition
- Large open plan living/dining and kitchen area with modern fittings
- Covered, secure underground allocated parking with lift access

Accommodation

GROUND FLOOR

Hallway

Lounge/Dining/Kitchen Area: 28'0 x 15'11 (8.54m x 4.85m)

Bedroom 1: 11'0 x 10'0 up to fitted wardrobes (3.36m x 3.05m)

Bathroom

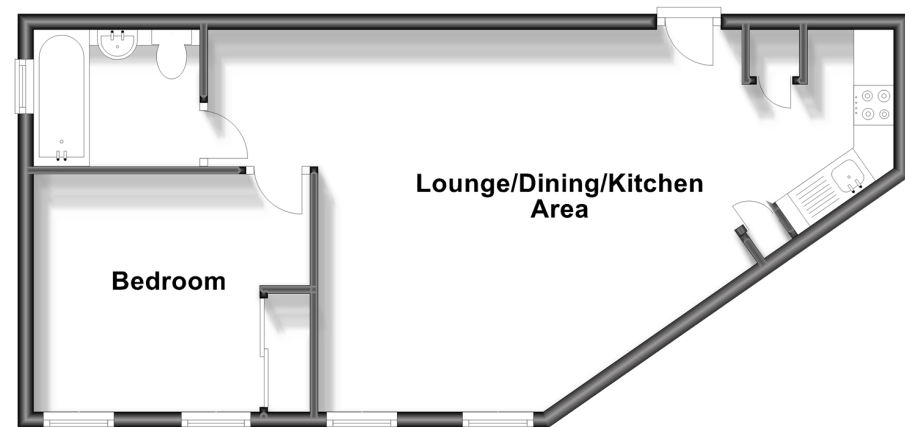
OUTSIDE

Communal Grounds

Underground Parking

Ground Floor

Approx. 45.1 sq. metres (485.2 sq. feet)



Call Maidstone - 01622 683737 ■ wardsofkent.co.uk

■ Legal advice should be taken to verify fixtures/fittings, planning, alterations and/or lease details
 ■ Through a Homewise Home For Life Plan people aged 60+ can secure this property for up to 59% less, by purchasing a Lifetime Lease.

■ Appliances & services are untested, dimensions are approximate and floor plans are not to scale



13157714/20230809/SS1/HS1