



**Price**  
**£750,000**

**Freehold**

2x  2x  2x 

**North Pole Road,  
Barming, Maidstone,  
Kent ME16**

**OVER 60?**

Secure this property  
for up to **59% less!**

*Wards*  
Helping you move forwards

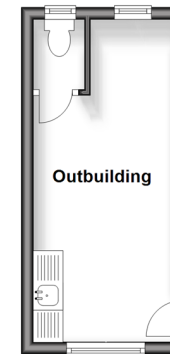
### Ground Floor

Approx. 167.9 sq. metres (1807.2 sq. feet)



### Outbuilding

Approx. 12.7 sq. metres (136.8 sq. feet)



## Accommodation

### GROUND FLOOR

Hallway  
Cloakroom  
Study: 7'9 x 6'5 (2.36m x 1.96m)  
Lounge: 32'0 x 17'2 (9.76m x 5.24m)  
Conservatory: 14'2 x 7'3 (4.32m x 2.21m)  
Inner Hall

Side Entrance  
Bedroom 1: 14'7 x 14'3 (4.45m x 4.35m)  
En-Suite Shower Room  
Bedroom 2: 13'8 x 11'8 (4.17m x 3.56m)  
Dining Room: 12'4 x 10'3 (3.76m x 3.13m)  
Bathroom: 10'4 x 7'5 (3.15m x 2.26m)  
Kitchen: 13'8 x 11'7 (4.17m x 3.53m)

### OUTBUILDING

Outbuilding: 17'7 x 7'8 (5.36m x 2.34m)

### OUTSIDE

Rear Garden  
Disused Swimming Pool  
Front Garden  
Garage: 17'9 x 10'4 (5.41m x 3.15m)





## Main features

- A substantial home with huge potential
- En-suite facilities to bedroom 1
- Located within one of Barming's most prestigious roads
- Generous size plot backing onto woodland
- An opportunity to create your forever home



### Nearest Schools

Primary Schools: Barming Primary 0.4 miles, West Borough Primary 1.3 miles, St Francis' Catholic Primary, Maidstone 1.8 miles

Secondary Schools: Bower Grove School 1.2 miles



### Transport Information

Train Stations: East Farleigh 1.0 miles, Barming 1.9 miles, Aylesford 2.2 miles



### Address

North Pole Road, Barming, Maidstone, Kent ME16



### Directions

For directions to this property please contact us.





Call Maidstone Branch 01622 683737 ■ [wardsofkent.co.uk](http://wardsofkent.co.uk)



■ Legal advice should be taken to verify fixtures/fittings, planning, alterations and/or lease details ■ Appliances & services are untested, dimensions are approximate and floor plans are not to scale  
■ Through a Homewise Home For Life Plan people aged 60+ can secure this property for up to 59% less, by purchasing a Lifetime Lease.



13157732/20240325/CV/DS