



Price
£160,000

Leasehold

1x  1x  1x 

**Hales Court, Church
Street, Maidstone, Kent
ME14**

OVER 60?

Secure this property
for up to **59% less!**

Wards
Helping you move forwards



Main features

- Chain free -beautifully presented, 2nd floor apartment
- Offered in excellent condition with neutral décor throughout
- Great, central location
- Large open plan living space with private balcony
- Modern, fitted kitchen with integrated appliances
- Spacious bedroom with double fitted wardrobes and views over communal areas

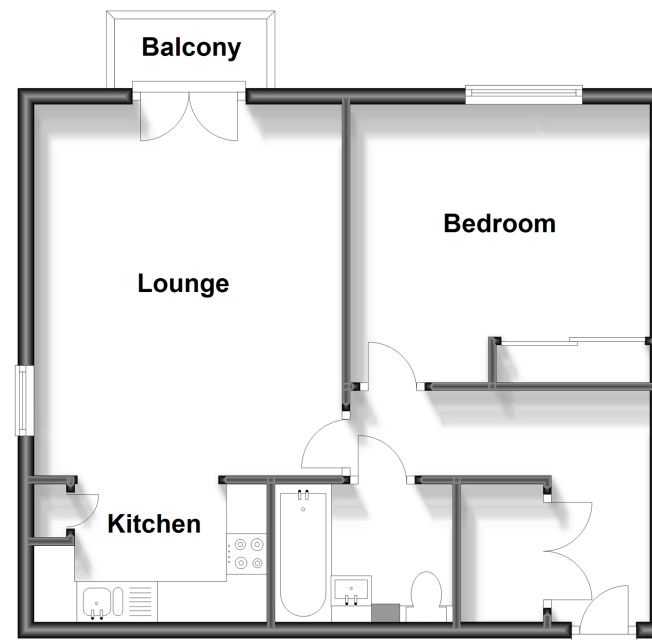
Accommodation

SECOND FLOOR

Hallway
 Lounge Area: 14'11 x 12'0 (4.55m x 3.66m)
 Balcony
 Kitchen : 9'0 x 5'0 (2.75m x 1.53m)
 Bedroom : 12'0 x 11'0 (3.66m x 3.36m)
 Bathroom

Second Floor

Approx. 48.6 sq. metres (523.3 sq. feet)



Call Maidstone - 01622 683737 ■ wardsofkent.co.uk

■ Legal advice should be taken to verify fixtures/fittings, planning, alterations and/or lease details
 ■ Through a Homewise Home For Life Plan people aged 60+ can secure this property for up to 59% less, by purchasing a Lifetime Lease.

■ Appliances & services are untested, dimensions are approximate and floor plans are not to scale



13157757/20230831/HS1/HS1