

OVER 60?

Secure this property
for up to **59% less!**



Price
£550,000
Freehold

3x  2x  2x 

Lombardy Drive, Woodlands, Maidstone,
Kent ME14

Wards
Helping you move forwards



Main features

- An attractive family house
- Generous size rear garden and driveway to front
- Located on the edge of a nature reserve
- Spacious feeling rooms and a conservatory
- Sought after location, ideal for schools and transport links

Accommodation

GROUND FLOOR

Porch
Hallway
Cloakroom
Lounge: 17'0 x 12'4 (5.19m x 3.76m)
Dining Area: 12'3 x 10'2 (3.74m x 3.10m)
Kitchen/Breakfast Area: 17'6 x 13'10 (5.34m x 4.22m)
Conservatory: 14'2 x 8'11 (4.32m x 2.72m)

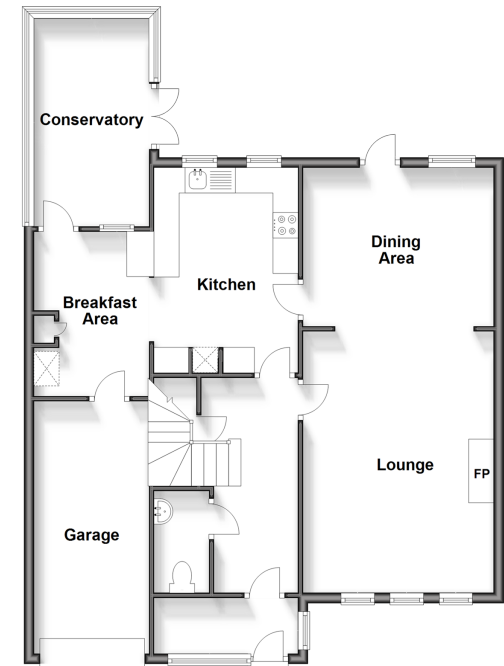
FIRST FLOOR

Landing
Bedroom 1: 12'2 x 10'7 (3.71m x 3.23m)
En-Suite Shower Room: 6'4 x 5'4 (1.93m x 1.63m)
Bedroom 2: 10'7 x 9'3 (3.23m x 2.82m)
Bedroom 3: 13'2 x 7'9 (4.02m x 2.36m)
Bathroom: 8'4 x 6'4 (2.54m x 1.93m)

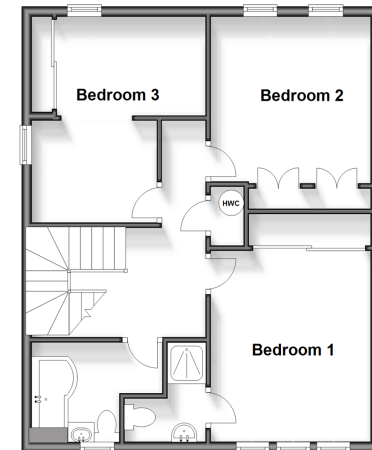
OUTSIDE

Rear Garden
Front Garden
Driveway
Integral Garage: 16'6 x 8'3 (5.03m x 2.52m)

Ground Floor
Approx. 89.3 sq. metres (961.4 sq. feet)



First Floor
Approx. 56.4 sq. metres (607.4 sq. feet)



Call Maidstone - 01622 683737 ■ wardsofkent.co.uk

- Legal advice should be taken to verify fixtures/fittings, planning, alterations and/or lease details
- Appliances & services are untested, dimensions are approximate and floor plans are not to scale
- Through a Homewise Home For Life Plan people aged 60+ can secure this property for up to 59% less, by purchasing a Lifetime Lease.



13157760/20240309/CV/MB