



**Price**

**£500,000**

**Freehold**

3x  1x  2x 

**Boxley Road, Penenden  
Heath, Maidstone, Kent,  
ME14**

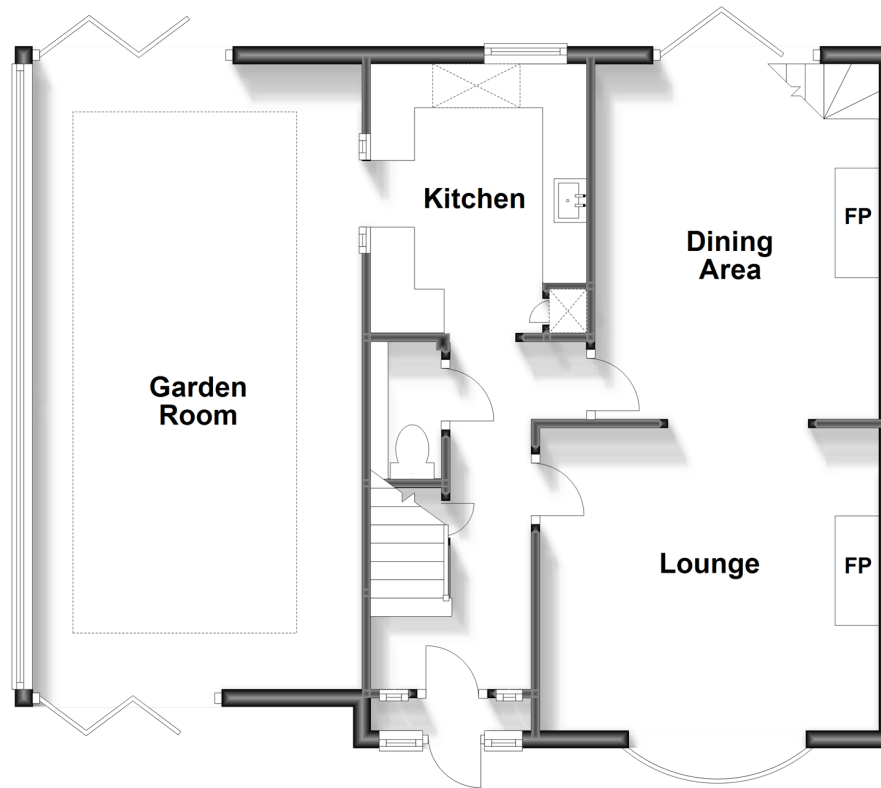
**OVER 60?**

Secure this property  
for up to **59% less!**

*Wards*  
Helping you move forwards

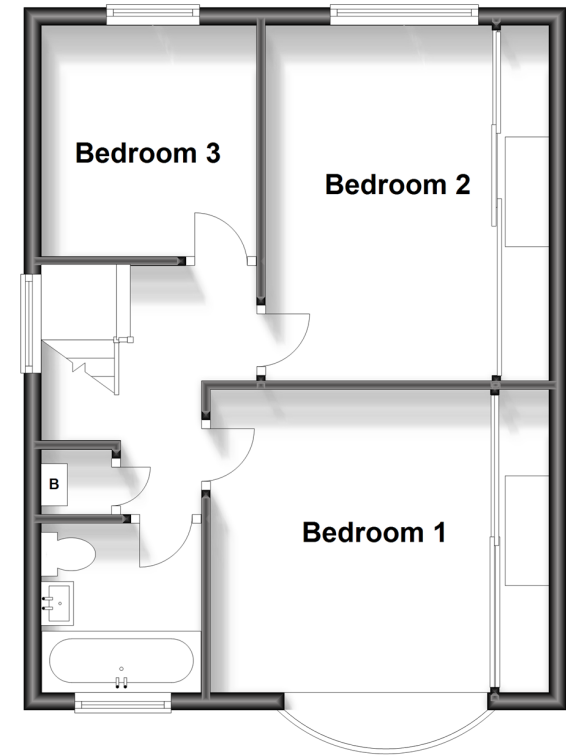
## Ground Floor

Approx. 71.8 sq. metres (772.7 sq. feet)



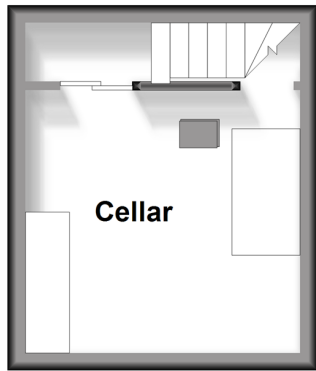
## First Floor

Approx. 44.5 sq. metres (478.5 sq. feet)



## Basement

Approx. 11.8 sq. metres (126.8 sq. feet)



## Accommodation

### GROUND FLOOR

Porch  
Hallway  
Toilet  
Lounge: 13'0 x 12'7 (3.97m x 3.84m)  
Dining Area: 13'2 x 10'6 (4.02m x 3.20m)  
Kitchen: 10'6 x 10'6 (3.20m x 3.20m)  
Garden Room: 23'2 x 12'0 (7.07m x 3.66m)

### BASEMENT

Cellar : 10'3 x 9'8 (3.13m x 2.95m)

### FIRST FLOOR

Landing  
Bedroom 1: 11'9 x 10'4 (3.58m x 3.15m)  
Bedroom 2: 13'2 x 10'8 (4.02m x 3.25m)  
Bedroom 3: 9'3 x 8'3 (2.82m x 2.52m)  
Bathroom : 6'3 x 6'0 (1.91m x 1.83m)

### OUTSIDE

Rear Garden  
Front Garden  
Garage: 21'1 x 15'0 (6.43m x 4.58m)





## Main features

- Superb extended 1930's style house
- Incredible botanical garden, a truly unique and exotic space
- No forward chain, move in quickly and enjoy
- Garden room extension
- Penenden Heath location, ideal for access to the shops, motorways and Maidstone East station



### Nearest Schools

Primary Schools: North Borough Junior School 0.6 miles, Sandling Primary 0.8 miles, Palace Wood Primary 1.5 miles



### Transport Information

Train Stations: Maidstone East 1.0 miles, Maidstone West 1.6 miles, Maidstone Barracks 1.9 miles



### Address

Boxley Road, Penenden Heath, Maidstone, Kent, ME14



### Directions

For directions to this property please contact us.





*Wards*  
Helping you move forwards

Call Maidstone Branch 01622 683737 ■ [wardsofkent.co.uk](http://wardsofkent.co.uk)



■ Legal advice should be taken to verify fixtures/fittings, planning, alterations and/or lease details ■ Appliances & services are untested, dimensions are approximate and floor plans are not to scale  
■ Through a Homewise Home For Life Plan people aged 60+ can secure this property for up to 59% less, by purchasing a Lifetime Lease.



13157761/20230817/CV/MB