



Price
£144,000

Leasehold

1x  1x  1x 

**Romney Place,
Maidstone, Kent ME15**

OVER 60?

Secure this property
for up to **59% less!**

Wards
Helping you move forwards



Main features

- **Spacious and bright 1st floor apartment**
- **Open plan kitchen/living space**
- **Generously sized bedroom with fitted wardrobe**
- **Allocated parking**
- **Extremely convenient location within the town centre with shops, night life, and train stations**

Accommodation

FIRST FLOOR

Kitchen/Living Space: 17'9 x 15'10 (5.41m x 4.83m)

Bedroom : 10'0 x 9'8 (3.05m x 2.95m)

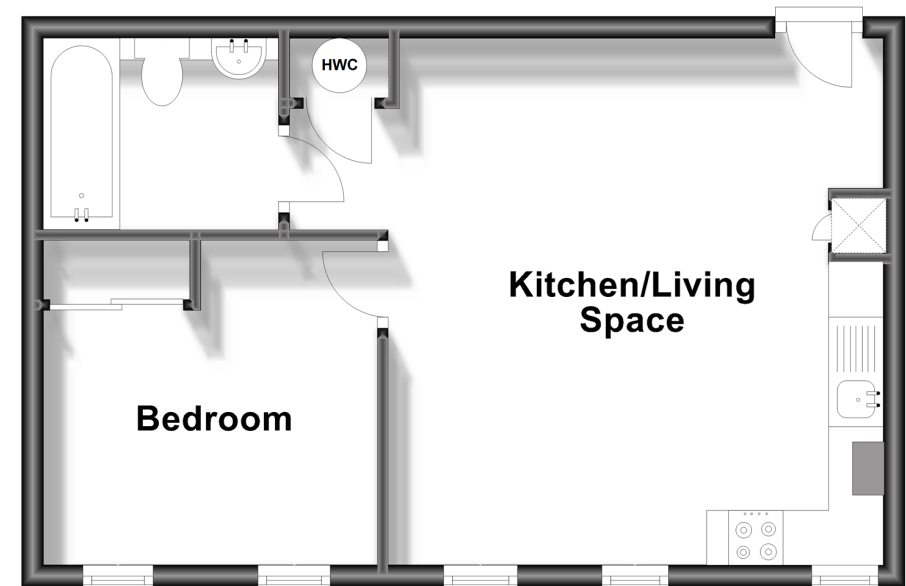
Bathroom

OUTSIDE

Allocated Parking

First Floor

Approx. 37.0 sq. metres (398.8 sq. feet)



Call Maidstone - 01622 683737 ■ wardsofkent.co.uk

■ Legal advice should be taken to verify fixtures/fittings, planning, alterations and/or lease details
 ■ Through a Homewise Home For Life Plan people aged 60+ can secure this property for up to 59% less, by purchasing a Lifetime Lease.

■ Appliances & services are untested, dimensions are approximate and floor plans are not to scale



13157776/20230824/JH/HS1