



OVER 60?

Secure this property
for up to **59% less!**

Price
£235,000

Freehold

2x  1x  2x 

**Thornhill Place,
Maidstone, Kent ME14**

Wards
Helping you move forwards



Main features

- Character style Victorian cottage
- Very well presented both inside and out
- Ideally located for access to the town centre and motorways
- Attractive rear garden
- Just a short walk from Maidstone East station

Accommodation

GROUND FLOOR

Lounge : 12'1 x 10'3 (3.69m x 3.13m)
Dining Area: 10'2 x 10'2 (3.10m x 3.10m)
Kitchen: 17'0 x 10'3 (5.19m x 3.13m)

FIRST FLOOR

Landing
Bedroom 1: 10'3 x 10'2 (3.13m x 3.10m)
Bedroom 2: 10'2 x 9'8 (3.10m x 2.95m)
Bathroom: 10'0 x 6'9 (3.05m x 2.06m)

OUTSIDE

Rear Garden
Front Garden

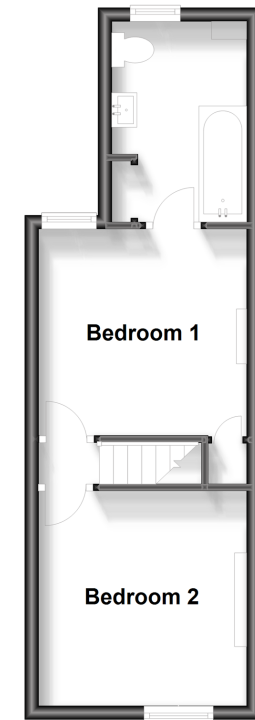
Ground Floor

Approx. 26.9 sq. metres (289.3 sq. feet)



First Floor

Approx. 27.0 sq. metres (290.9 sq. feet)



Call Maidstone - 01622 683737 ■ wardsofkent.co.uk

■ Legal advice should be taken to verify fixtures/fittings, planning, alterations and/or lease details
■ Through a Homewise Home For Life Plan people aged 60+ can secure this property for up to 59% less, by purchasing a Lifetime Lease.

■ Appliances & services are untested, dimensions are approximate and floor plans are not to scale



13157779/20230824/SS1/MB