



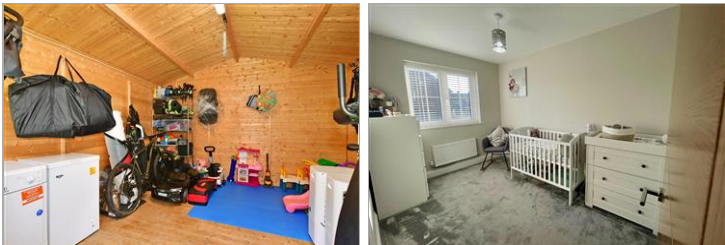
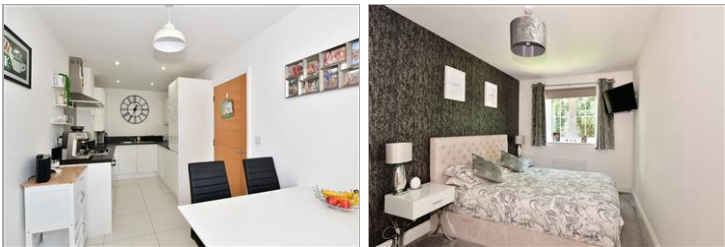
Price
£350,000

Freehold

3x  2x  1x 

**Farleigh Heights, Tovil,
Maidstone, Kent ME15**

Wards
Helping you move forwards



Main features

- Immaculately presented family house with upgrades throughout
- Located on the fringes of semi-rural East Farleigh and Maidstone
- Built in 2017 and benefitting from 5 years remaining NHBC
- Bedroom 1 having fitted wardrobes and en-suite shower room
- Summer house with electrics

Accommodation

GROUND FLOOR

Hallway

Cloakroom

Lounge: 14'7 x 13'9 (4.45m x 4.19m)

Kitchen/Diner: 17'0 x 7'0 (5.19m x 2.14m)

FIRST FLOOR

Landing

Bedroom 1: 14'0 x 8'4 (4.27m x 2.54m)

En-Suite Shower Room

Bedroom 2: 13'9 x 7'8 (4.19m x 2.34m)

Bedroom 3: 10'4 x 7'0 (3.15m x 2.14m)

Bathroom

OUTSIDE

Rear Garden

Summer House: 12'0 x 12'0 (3.66m x 3.66m)

Front Garden

Driveway

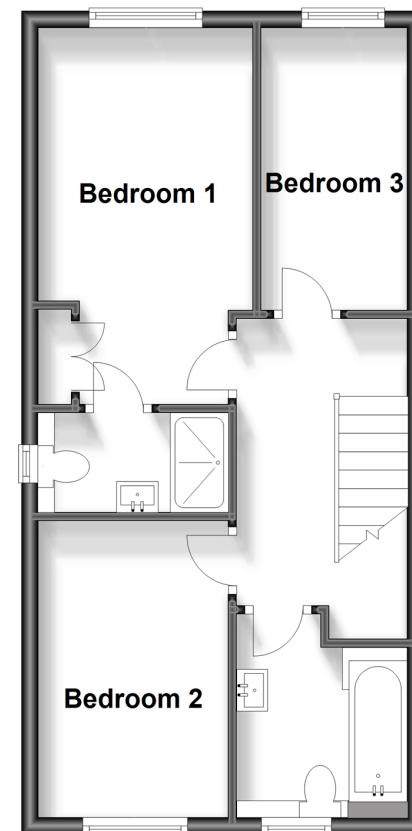
Ground Floor

Approx. 41.9 sq. metres (451.1 sq. feet)



First Floor

Approx. 41.7 sq. metres (448.9 sq. feet)



Call Maidstone - 01622 683737 ■ wardsofkent.co.uk

- Legal advice should be taken to verify fixtures/fittings, planning, alterations and/or lease details
- Appliances & services are untested, dimensions are approximate and floor plans are not to scale
- Through a Homewise Home For Life Plan people aged 60+ can secure this property for up to 59% less, by purchasing a Lifetime Lease.



13157800/20240112/DS/HS1