



Price
£425,000

Freehold

4x  2x  2x 

**Farleigh Lane,
Maidstone, Kent ME16**

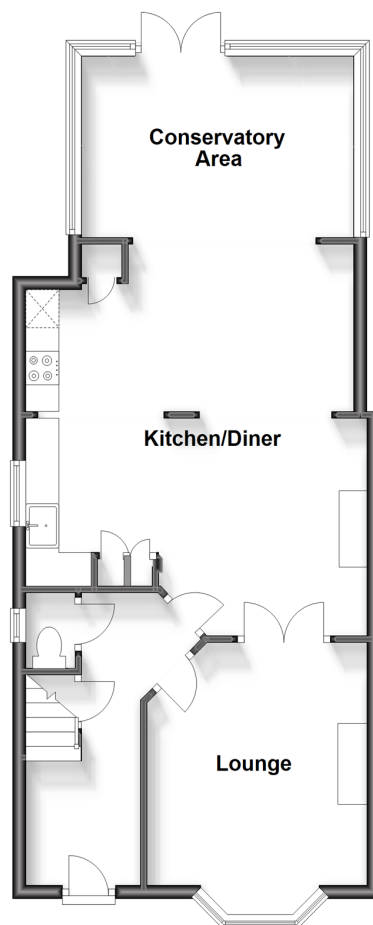
OVER 60?

Secure this property
for up to **59% less!**

Wards
Helping you move forwards

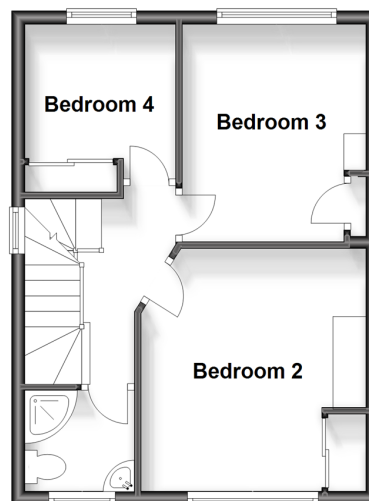
Ground Floor

Approx. 643.3 sq. feet



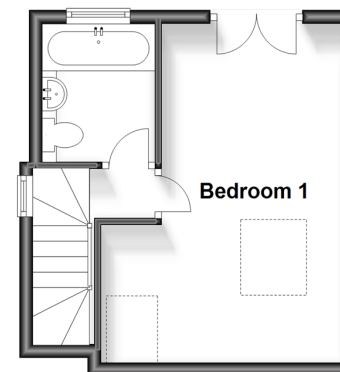
First Floor

Approx. 393.1 sq. feet



Second Floor

Approx. 251.2 sq. feet



Accommodation

GROUND FLOOR

Entrance Hall

Toilet

Lounge: 14'0 into bay x 11'0 (4.27m x 3.36m)

Kitchen.Diner: 19'6 x 16'8 (5.95m x 5.08m)

Conservatory Area: 13'10 x 9'5 (4.22m x 2.87m)

FIRST FLOOR

Landing

Bedroom 2: 11'4 x 11'0 (3.46m x 3.36m)

Bedroom 3: 11'2 x 9'10 (3.41m x 3.00m)

Bedroom 4: 7'6 x 7'5 (2.29m x 2.26m)

Shower Room

SECOND FLOOR

Landing

Bedroom 1: 16'4 x 9'0 (4.98m x 2.75m)

Bathroom

OUTSIDE

Rear Garden

Summer House

Front Garden

Driveway



Main features

- Located on the outskirts of Barming
- Large rear garden complete with summerhouse/shed
- Extended on the ground floor to provide an open plan space for entertaining
- Attic room conversion complete with adjacent bathroom
- Ample off road parking, double glazing and central heating



Nearest Schools

Primary Schools: Barming Primary 0.4 miles, West Borough Primary 0.5 miles, St Francis' Catholic Primary, Maidstone 0.9 miles

Secondary Schools: Bower Grove School 0.3 miles



Transport Information

Train Stations: East Farleigh 0.0 miles, Barming 1.4 miles, Maidstone West 1.5 miles



Address

Farleigh Lane, Maidstone, Kent ME16



Directions

For directions to this property please contact us.



Call Maidstone Branch 01622 683737 ■ wardsofkent.co.uk



- Legal advice should be taken to verify fixtures/fittings, planning, alterations and/or lease details
- Appliances & services are untested, dimensions are approximate and floor plans are not to scale
- Through a Homewise Home For Life Plan people aged 60+ can secure this property for up to 59% less, by purchasing a Lifetime Lease.



13157832/20231018/SS1/DS