



**Price**  
**£375,000**

**Freehold**

4x  1x  1x 

**Passmore Way, Tovil,  
Maidstone, Kent ME15**

**OVER 60?**

Secure this property  
for up to **59% less!**

*Wards*  
Helping you move forwards



## Main features

- Extended family home with flexible layout
- Lovely open plan lounge to rear
- Modern interior, stylish kitchen
- No forward chain
- Convenient location for shops, schools and amenities.

## Accommodation

### GROUND FLOOR

Hallway  
Cloakroom  
Bedroom 4: 10'11 x 8'0 (3.33m x 2.44m)  
Kitchen/Diner: 15'0 x 13'0 (4.58m x 3.97m)  
Lounge: 13'0 x 10'0 (3.97m x 3.05m)

### FIRST FLOOR

Landing  
Bedroom 1: 14'0 x 8'8 (4.27m x 2.64m)  
Bedroom 2: 10'11 x 6'0 (3.33m x 1.83m)  
Bedroom 3: 10'0 x 8'0 (3.05m x 2.44m)  
Study: 8'0 (2.44m) narrowing to 6'0 (1.83m) x 6'0 (1.83m)  
Bathroom

### OUTSIDE

Rear Garden  
Front Garden  
Garage  
2 Parking Spaces

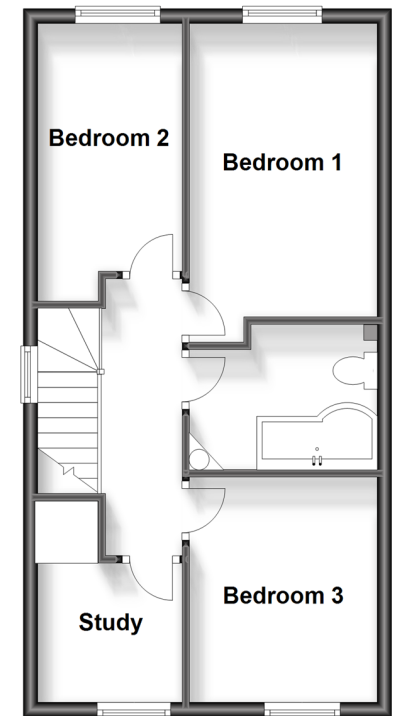
### Ground Floor

Approx. 57.7 sq. metres (621.6 sq. feet)



### First Floor

Approx. 43.0 sq. metres (463.1 sq. feet)



**Call Maidstone - 01622 683737 ■ [wardsofkent.co.uk](http://wardsofkent.co.uk)**

- Legal advice should be taken to verify fixtures/fittings, planning, alterations and/or lease details
- Appliances & services are untested, dimensions are approximate and floor plans are not to scale
- Through a Homewise Home For Life Plan people aged 60+ can secure this property for up to 59% less, by purchasing a Lifetime Lease.



13157834/20240108/CV/HS1