

OVER 60?

Secure this property
for up to **59% less!**



Price

£425,000

Freehold

2x  1x  1x 

Ashdown Close, Maidstone, Kent ME16

Wards
Helping you move forwards



Main features

- A substantial bungalow located on a generous corner plot with potential to extend (Subject to planning consent)
- Lounge with separate dining room and triple aspect garden room overlooking the side garden
- Double glazing and central heating
- Ample off road parking and a single garage
- Set in a cul-de-sac, located off one of Maidstone's premier and exclusive residential roads

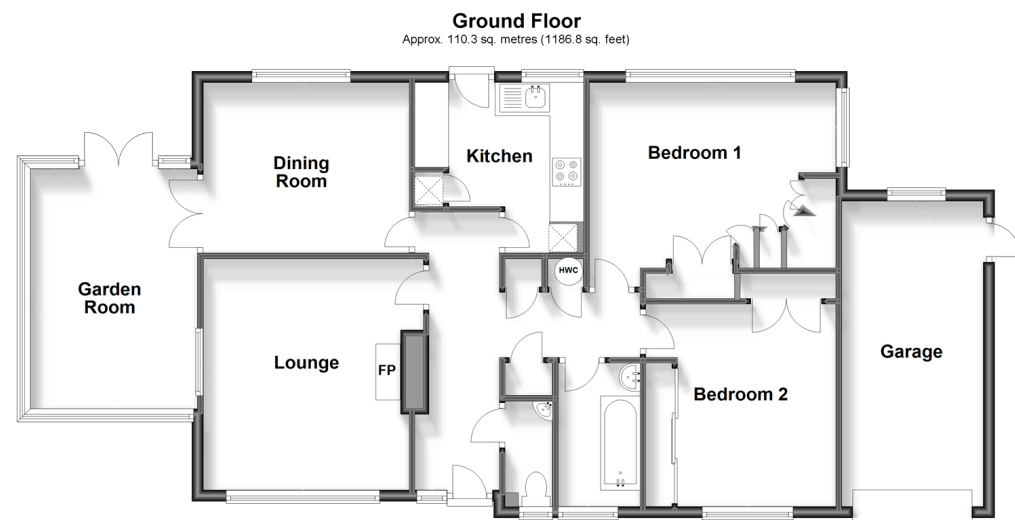
Accommodation

GROUND FLOOR

Hallway
Cloakroom
Lounge: 13'5 x 12'8 (4.09m x 3.86m)
Dining Room: 11'10 x 9'10 (3.61m x 3.00m)
Garden Room : 14'7 x 9'9 (4.45m x 2.97m)
Kitchen: 9'9 x 9'8 (2.97m x 2.95m)
Inner Hallway
Bathroom
Bedroom 1: 14'3 x 11'1 (4.35m x 3.38m)
Bedroom 2: 11'8 x 11'3 (3.56m x 3.43m)

OUTSIDE

Rear Garden
Front Garden
Driveway
Garage: 17'5 x 8'7 (5.31m x 2.62m)



Call Maidstone - 01622 683737 ■ wardsofkent.co.uk

■ Legal advice should be taken to verify fixtures/fittings, planning, alterations and/or lease details
■ Through a Homewise Home For Life Plan people aged 60+ can secure this property for up to 59% less, by purchasing a Lifetime Lease.

■ Appliances & services are untested, dimensions are approximate and floor plans are not to scale