

**OVER 60?**

Secure this property  
for up to **59% less!**



**Price**

**£675,000**

**Freehold**

5x  3x  2x 

Longsole Way, Maidstone, Kent ME16

*Wards*  
Helping you move forwards





## Main features

- Substantial executive house
- Located at the head of this quiet cul-de-sac
- En-suite facilities, bathroom and downstairs cloakroom
- Generous gardens to front and rear with tree lined views to front
- Ideal location for amenities

## Accommodation

### GROUND FLOOR

Hallway  
Cloakroom  
Lounge: 15'5 into bay (4.70m) narrowing to 12'6 (3.81m) x 15'0 (4.58m)  
Bedroom 5: 9'9 x 7'8 (2.97m x 2.34m)  
Family Room: 12'0 x 10'11 (3.66m x 3.33m)  
Kitchen/Dining Room: 20'3 x 12'1 (6.18m x 3.69m)  
Utility Room: 7'5 x 5'5 (2.26m x 1.65m)

### FIRST FLOOR

Landing  
Bedroom 1: 20'0 x 11'3 (6.10m x 3.43m) narrowing to 12'8 x 5'9 (3.86m x 1.75m)  
En-Suite Shower Room  
Bedroom 2: 12'3 x 10'2 up to fitted wardrobes (3.74m x 3.10m)  
En-Suite Shower Room  
Bedroom 3: 11'6 (3.51m) x 10'5 (3.18m) narrowing to 7'9 (2.36m)  
Bedroom 4: 10'0 x 8'8 (3.05m x 2.64m)  
Study/Dressing Room: 9'9 x 8'8 (2.97m x 2.64m)  
Bathroom

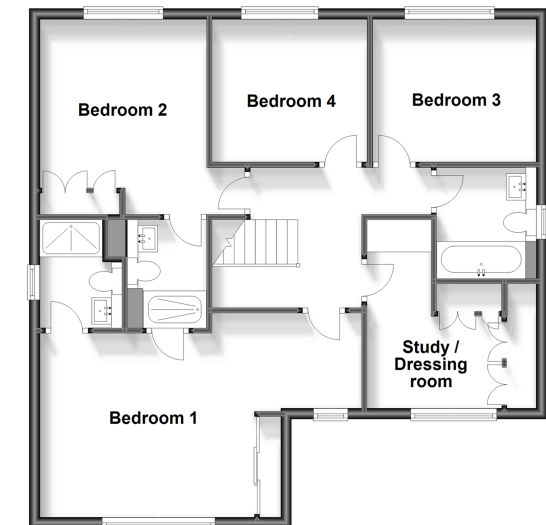
### OUTSIDE

Rear Garden  
Front Garden  
Off Road Parking  
Garage

**Ground Floor**  
Approx. 79.6 sq. metres (857.1 sq. feet)



**First Floor**  
Approx. 78.4 sq. metres (843.7 sq. feet)



**Call Maidstone - 01622 683737 ■ wardsofkent.co.uk**

- Legal advice should be taken to verify fixtures/fittings, planning, alterations and/or lease details
- Appliances & services are untested, dimensions are approximate and floor plans are not to scale
- Through a Homewise Home For Life Plan people aged 60+ can secure this property for up to 59% less, by purchasing a Lifetime Lease.



13157854/20230929/CV/DS