



**Price**  
**£200,000**

**Leasehold**

2x  1x  1x 

**St. Anne's Court,  
Maidstone, Kent ME16**

**OVER 60?**

Secure this property  
for up to **59% less!**

*Wards*  
Helping you move forwards





## Main features

- Well presented retirement house for the over 55s
- Large, open plan living/dining room and separate kitchen
- Private garden to the rear perfect for pottering
- Benefiting from resident's and visitor parking
- Excellent almost central location being just a short walk from local shops and the town centre

## Accommodation

### GROUND FLOOR

Hallway  
Cloakroom  
Kitchen: 8'0 x 7'0 (2.44m x 2.14m)  
Conservatory: 6'0 x 4'0 (1.83m x 1.22m)  
Dining Area: 11'0 x 9'0 (3.36m x 2.75m)  
Lounge Area: 15'0 x 8'0 (4.58m x 2.44m)

### FIRST FLOOR

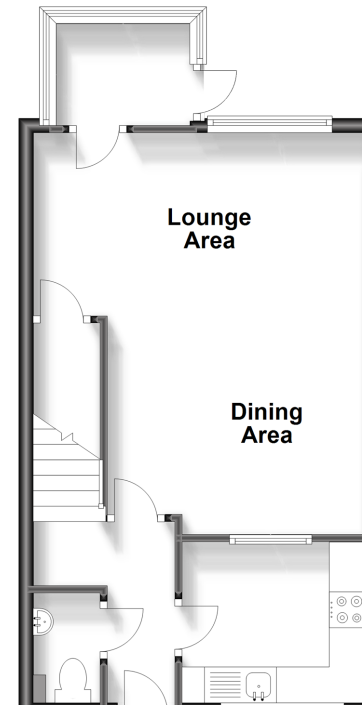
Landing  
Bedroom 1: 13'0 x 8'0 (3.97m x 2.44m)  
Bedroom 2: 7'0 x 5'0 (2.14m x 1.53m)  
Shower Room

### OUTSIDE

Rear Garden  
Front Garden  
Allocated Parking

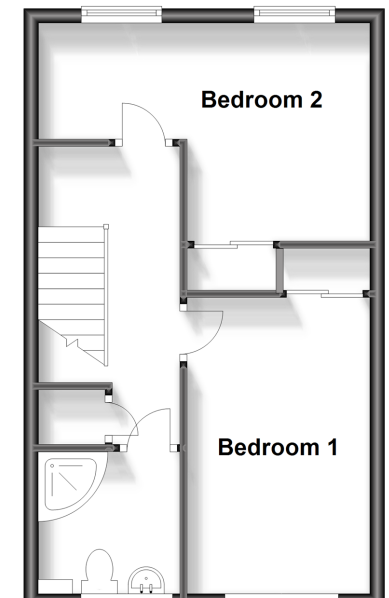
### Ground Floor

Approx. 39.6 sq. metres (426.7 sq. feet)



### First Floor

Approx. 36.7 sq. metres (394.6 sq. feet)



**Call Maidstone - 01622 683737 ■ wardsofkent.co.uk**

■ Legal advice should be taken to verify fixtures/fittings, planning, alterations and/or lease details  
■ Through a Homewise Home For Life Plan people aged 60+ can secure this property for up to 59% less, by purchasing a Lifetime Lease.

■ Appliances & services are untested, dimensions are approximate and floor plans are not to scale



13157855/20231013/HS1/HS1