



OVER 60?

Secure this property
for up to **59% less!**

Price

£310,000

Freehold

3x  1x  1x 

**Newchurch Road,
Maidstone, Kent ME15**

Wards
Helping you move forwards



Main features

- **Neatly presented family house in good condition**
- **Open plan kitchen/diner to the rear with patio doors leading to the spacious rear garden**
- **Benefiting from generously sized bedrooms with bedroom 1 having fitted wardrobes**
- **Parking on the driveway with gates leading to secure parking**
- **Excellent location within walking distance of local schools, the town centre with transport links including trains to London**

Accommodation

GROUND FLOOR

Entrance Porch

Lounge: 14'0 x 13'11 (4.27m x 4.24m)

Kitchen : 9'10 x 7'0 (3.00m x 2.14m)

Dining Area: 9'0 x 7'10 (2.75m x 2.39m)

FIRST FLOOR

Landing

Bedroom 1: 13'0 x 8'0 (3.97m x 2.44m)

Bedroom 2: 9'0 x 8'0 (2.75m x 2.44m)

Bedroom 3: 7'10 x 6'0 (2.39m x 1.83m)

Bathroom

OUTSIDE

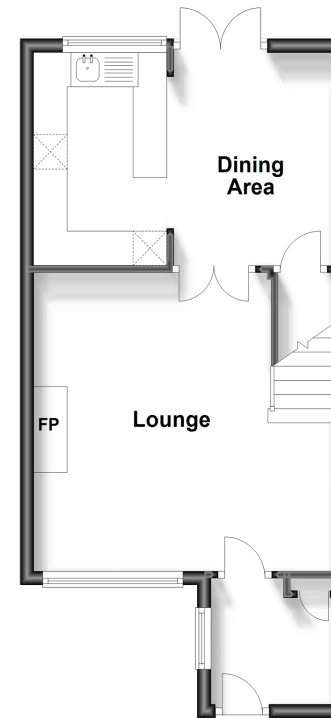
Rear Garden

Front Garden

Driveway

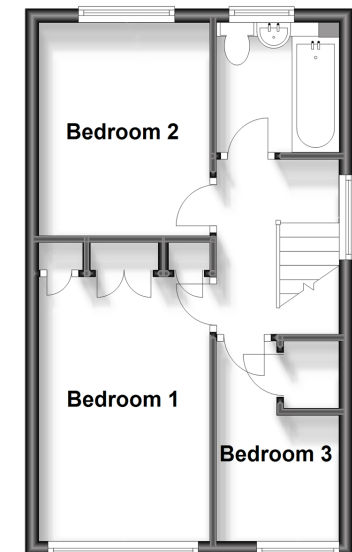
Ground Floor

Approx. 37.2 sq. metres (400.6 sq. feet)



First Floor

Approx. 33.7 sq. metres (362.6 sq. feet)



Call Maidstone - 01622 683737 ■ wardsofkent.co.uk

- Legal advice should be taken to verify fixtures/fittings, planning, alterations and/or lease details
- Through a Homewise Home For Life Plan people aged 60+ can secure this property for up to 59% less, by purchasing a Lifetime Lease.

- Appliances & services are untested, dimensions are approximate and floor plans are not to scale



13157865/20231129/MB/HS1