

**OVER 60?**

Secure this property  
for up to **59% less!**



**Price**  
**£575,000**  
**Freehold**

4x  2x  1x 

Lodge Close, Allington, Maidstone, Kent  
ME16

*Wards*  
Helping you move forwards





## Main features

- A modern house located within the heart of Allington
- Set within a quiet residential cul-de-sac
- Open plan kitchen/diner, separate garden room
- Double detached garage and off road parking
- Easy access to local amenities

## Accommodation

### GROUND FLOOR

Hallway  
Cloakroom  
Kitchen/Diner: 15'0 x 14'6 (4.58m x 4.42m)  
Lounge: 23'0 x 11'3 (7.02m x 3.43m)  
Garden Room: 12'6 x 12'5 (3.81m x 3.79m)

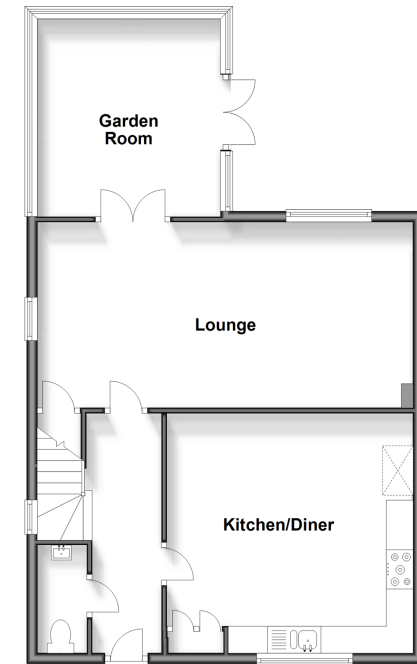
### FIRST FLOOR

Landing  
Bedroom 1: 14'10 (4.52m) narrowing to 10'7 (3.23m) x 9'3 (2.82m)  
En-Suite Shower Room  
Bedroom 2: 10'7 x 9'3 (3.23m x 2.82m)  
Bedroom 3: 9'8 x 8'2 (2.95m x 2.49m)  
Bedroom 4: 11'4 x 7'7 (3.46m x 2.31m) narrowing to 6'6 x 3'8 (1.98m x 1.12m)  
Bathroom

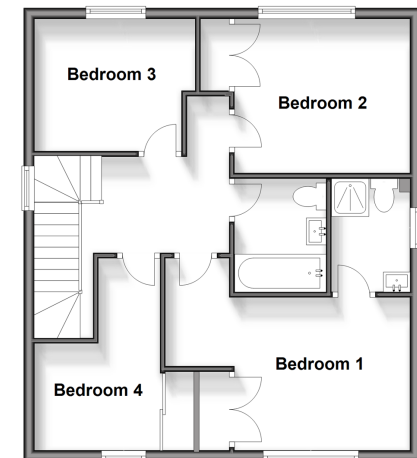
### OUTSIDE

Rear Garden  
Front Garden  
Driveway  
Double Garage

**Ground Floor**  
Approx. 69.1 sq. metres (744.2 sq. feet)



**First Floor**  
Approx. 56.2 sq. metres (605.2 sq. feet)



**Call Maidstone - 01622 683737 ■ [wardsofkent.co.uk](http://wardsofkent.co.uk)**

- Legal advice should be taken to verify fixtures/fittings, planning, alterations and/or lease details
- Appliances & services are untested, dimensions are approximate and floor plans are not to scale
- Through a Homewise Home For Life Plan people aged 60+ can secure this property for up to 59% less, by purchasing a Lifetime Lease.



13157871/20240207/SS1/DS