



Price
£800,000

Freehold

5x  3x  2x 

**Whatman Close,
Maidstone, Kent ME14**

OVER 60?

Secure this property
for up to **59% less!**

Wards
Helping you move forwards



Main features

- Executive style family house
- 2 en-suite shower rooms, double garage and ample parking
- Secluded yet convenient location, very private position
- High quality re-fitted kitchen/breakfast/family room
- Ideally situated for access to schools, the station and motorways

Accommodation

GROUND FLOOR

Entrance Porch
Hallway
Dining Room: 11'0 x 11'0 (3.36m x 3.36m)
Lounge: 20'0 x 13'6 (6.10m x 4.12m)
Kitchen/Breakfast/Family Room: 34'0 x 11'3 (10.37m x 3.43m)
Utility Room
Cloakroom

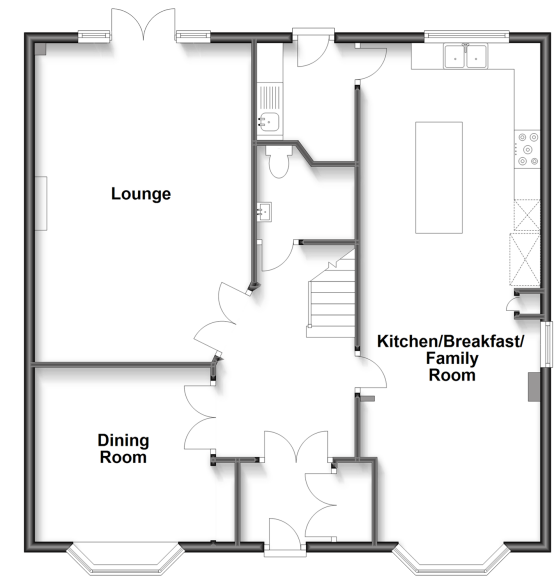
FIRST FLOOR

Landing
Bedroom 1: 16'7 x 13'5 (5.06m x 4.09m)
En-Suite Bathroom
Bedroom 2: 11'2 x 11'0 (3.41m x 3.36m)
En-Suite Shower Room
Bedroom 3: 9'2 x 9'1 (2.80m x 2.77m)
Bedroom 4: 11'4 x 7'6 (3.46m x 2.29m)
Bedroom 5: 9'8 x 7'6 (2.95m x 2.29m)
Bathroom

OUTSIDE

Rear Garden
Front Garden
Garage

Ground Floor
Approx. 91.9 sq. metres (989.1 sq. feet)



First Floor
Approx. 94.9 sq. metres (1022.0 sq. feet)



Call Maidstone - 01622 683737 ■ wardsofkent.co.uk

- Legal advice should be taken to verify fixtures/fittings, planning, alterations and/or lease details
- Appliances & services are untested, dimensions are approximate and floor plans are not to scale
- Through a Homewise Home For Life Plan people aged 60+ can secure this property for up to 59% less, by purchasing a Lifetime Lease.



13157883/20240326/JH/MB