



OVER 60?

Secure this property
for up to **59% less!**

Price

£240,000

Freehold

2x  1x  1x 

**Shortlands Green,
Maidstone, Kent ME15**

Wards
Helping you move forwards



Main features

- Recently refurbished house
- Low running costs, council tax band A, Epc rating C
- High specification kitchen
- Lovely rear garden plus child friendly green to front
- Very convenient for schools and amenities

Accommodation

GROUND FLOOR

Entrance Porch

Kitchen: 13'1 x 7'1 (3.99m x 2.16m)

Lounge: 15'3 x 11'4 (4.65m x 3.46m)

Dining Area: 13'1 x 8'11 (3.99m x 2.72m)

FIRST FLOOR

Landing

Bedroom 1: 10'9 x 8'5 (3.28m x 2.57m)

Bedroom 2: 12'4 x 11'9 (3.76m x 3.58m)

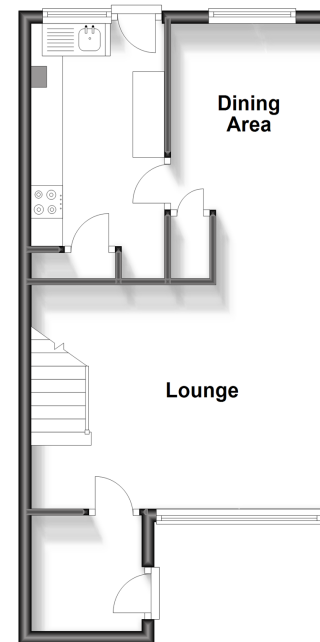
Bathroom: 8'7 x 6'6 (2.62m x 1.98m)

OUTSIDE

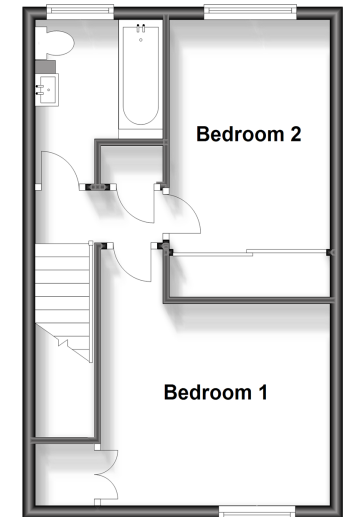
Rear Garden

Front Garden

Ground Floor
Approx. 38.3 sq. metres (412.0 sq. feet)



First Floor
Approx. 34.7 sq. metres (373.7 sq. feet)



Call Maidstone - 01622 683737 ■ wardsofkent.co.uk

■ Legal advice should be taken to verify fixtures/fittings, planning, alterations and/or lease details
■ Through a Homewise Home For Life Plan people aged 60+ can secure this property for up to 59% less, by purchasing a Lifetime Lease.

■ Appliances & services are untested, dimensions are approximate and floor plans are not to scale