



**OVER 60?**

Secure this property  
for up to **59% less!**

**Price**

**£90,000**

**Leasehold**

1x  1x  1x 

**London Road,  
Maidstone, Kent ME16**

*Wards*  
Helping you move forwards





## Main features

- Affordable and conveniently located  
1st floor studio flat
- No chain
- Super studio with separate sleeping/dressing area
- Parking area to front
- Walking distance from the town centre, ideal for amenities

## Accommodation

### FIRST FLOOR

Hallway

Living/Kitchen Area: 11'0 x 11'0  
(3.36m x 3.36m)

Bedroom : 10'0 x 6'10 (3.05m x 2.08m)

Dressing Area: 8'0 x 4'0 (2.44m x 1.22m)

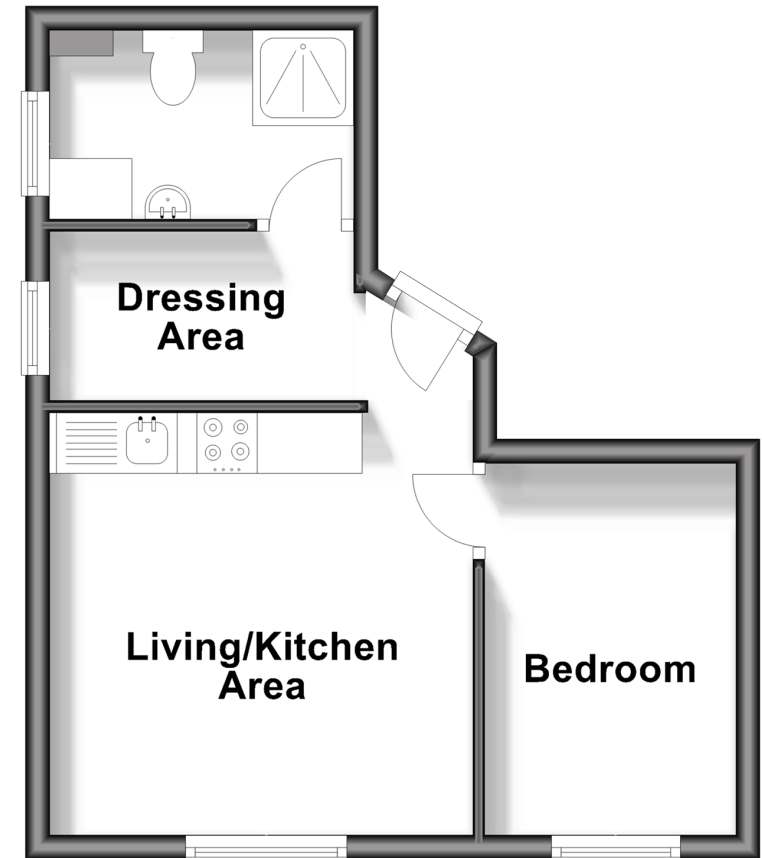
Shower Room

### OUTSIDE

Communal Parking To Front

## First Floor

Approx. 27.5 sq. metres (295.8 sq. feet)



**Call Maidstone - 01622 683737 ■ [wardsofkent.co.uk](http://wardsofkent.co.uk)**

- Legal advice should be taken to verify fixtures/fittings, planning, alterations and/or lease details
- Appliances & services are untested, dimensions are approximate and floor plans are not to scale
- Through a Homewise Home For Life Plan people aged 60+ can secure this property for up to 59% less, by purchasing a Lifetime Lease.



13157902/20240111/SS1/HS1