



**Price**  
**£350,000**

**Freehold**

3x  1x  2x 

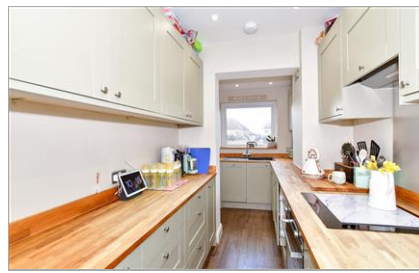
**Birch Tree Way,  
Maidstone, Kent ME15**

**OVER 60?**

Secure this property  
for up to **59% less!**

**Wards**  
Helping you move forwards





## Main features

- Close proximity to Maidstone town centre as well as Mote Park
- Recently renovated throughout
- Spacious accommodation and generous size sunny rear garden
- Quiet residential location
- Close to transport links and grammar schools

## Accommodation

### GROUND FLOOR

Porch  
Hallway  
Lounge: 11'6 x 11'6 (3.51m x 3.51m)  
Dining Area: 11'6 x 11'4 (3.51m x 3.46m)  
Cloakroom  
Kitchen: 14'4 x 6'3 (4.37m x 1.91m)

### FIRST FLOOR

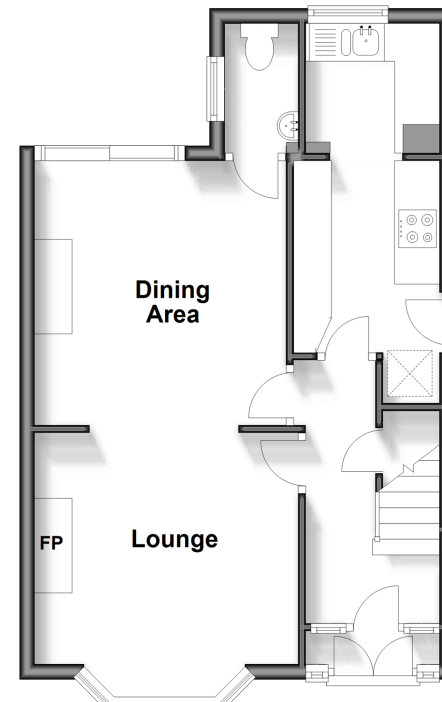
Landing  
Bedroom 1: 11'9 x 11'1 (3.58m x 3.38m)  
Bedroom 2: 11'6 x 11'1 (3.51m x 3.38m)  
Bedroom 3: 6'9 x 6'3 (2.06m x 1.91m)  
Bathroom

### OUTSIDE

Rear Garden  
Front Garden  
Driveway

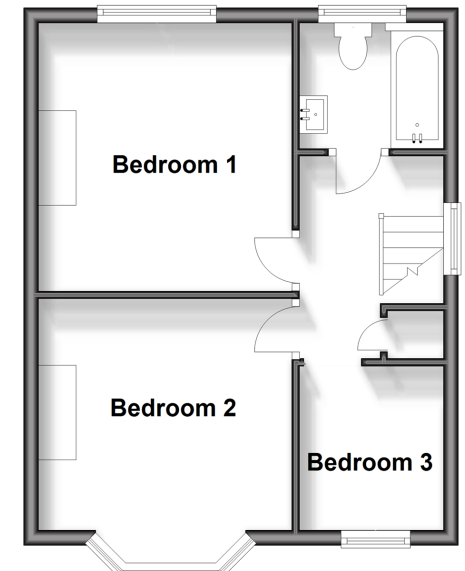
### Ground Floor

Approx. 41.2 sq. metres (443.9 sq. feet)



### First Floor

Approx. 36.4 sq. metres (391.8 sq. feet)



**Call Maidstone - 01622 683737 ■ wardsofkent.co.uk**

■ Legal advice should be taken to verify fixtures/fittings, planning, alterations and/or lease details  
■ Through a Homewise Home For Life Plan people aged 60+ can secure this property for up to 59% less, by purchasing a Lifetime Lease.

■ Appliances & services are untested, dimensions are approximate and floor plans are not to scale



13157912/20240306/JH/LB01