



OVER 60?

Secure this property
for up to **59% less!**

Price

£250,000

Leasehold

2x  1x  1x 

**Queensway, Detling,
Maidstone, Kent ME14**

Wards
Helping you move forwards



Main features

- Modern and well-maintained ground floor maisonette
- Set in a semi-rural location in a quiet cul-de-sac within Detling village
- Ample living space with spacious lounge leading to the fabulous conservatory
- Modern bathroom and kitchen with fully integrated appliances
- Benefitting from a private driveway and low maintenance rear garden

Accommodation

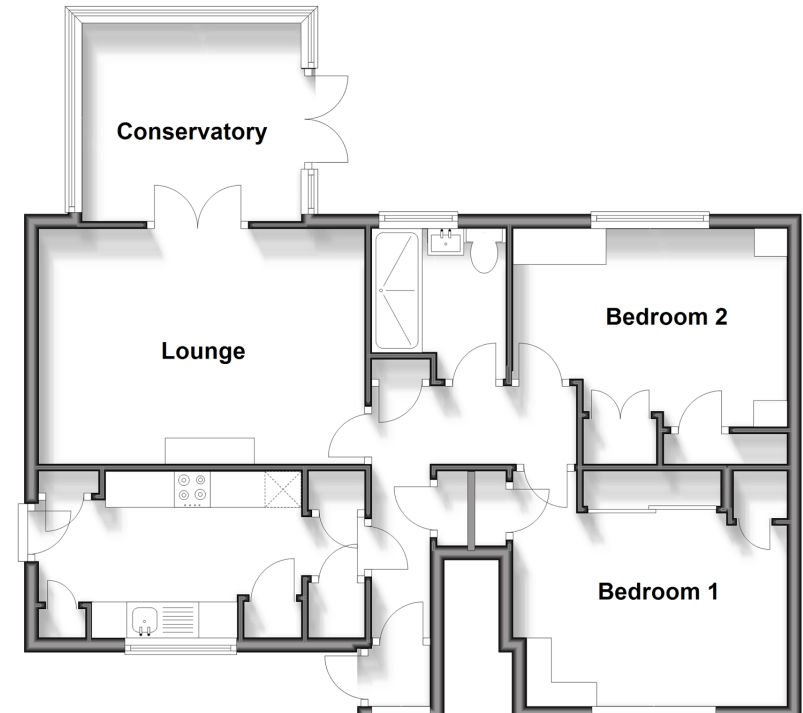
GROUND FLOOR

Porch
Hallway
Kitchen: 12'0 x 7'6 (3.66m x 2.29m)
Lounge: 14'10 x 10'0 (4.52m x 3.05m)
Conservatory: 10'0 x 9'0 (3.05m x 2.75m)
Bedroom 1: 12'0 x 9'0 (3.66m x 2.75m)
Bedroom 2: 12'0 x 9'0 (3.66m x 2.75m)
Shower Room

OUTSIDE

Garden
Off Road Parking

Ground Floor
Approx. 70.4 sq. metres (757.4 sq. feet)



Call Maidstone - 01622 683737 ■ wardsofkent.co.uk

■ Legal advice should be taken to verify fixtures/fittings, planning, alterations and/or lease details
■ Through a Homewise Home For Life Plan people aged 60+ can secure this property for up to 59% less, by purchasing a Lifetime Lease.

■ Appliances & services are untested, dimensions are approximate and floor plans are not to scale