

OVER 60?

Secure this property
for up to **59% less!**



Price

£450,000

Freehold

3x  1x  3x 

Maryland Drive, Maidstone, Kent ME16

Wards
Helping you move forwards



Main features

- Impressive family house
- Extended to side and front, providing spacious/flexible accommodation
- providing lots of outdoor space
- 2 garages and a double driveway, large corner plot
- Ideal location for Barming primary school

Accommodation

GROUND FLOOR

Porch
Hallway
Study: 8'9 x 7'2 (2.67m x 2.19m)
Lounge: 15'5 x 14'7 (4.70m x 4.45m)
Family Area: 9'2 x 8'9 (2.80m x 2.67m)
Kitchen/Dining Area: 18'7 x 9'5 (5.67m x 2.87m)
Sun Room: 14'9 at widest point x 8'9 (4.50m x 2.67m)
Cloakroom

FIRST FLOOR

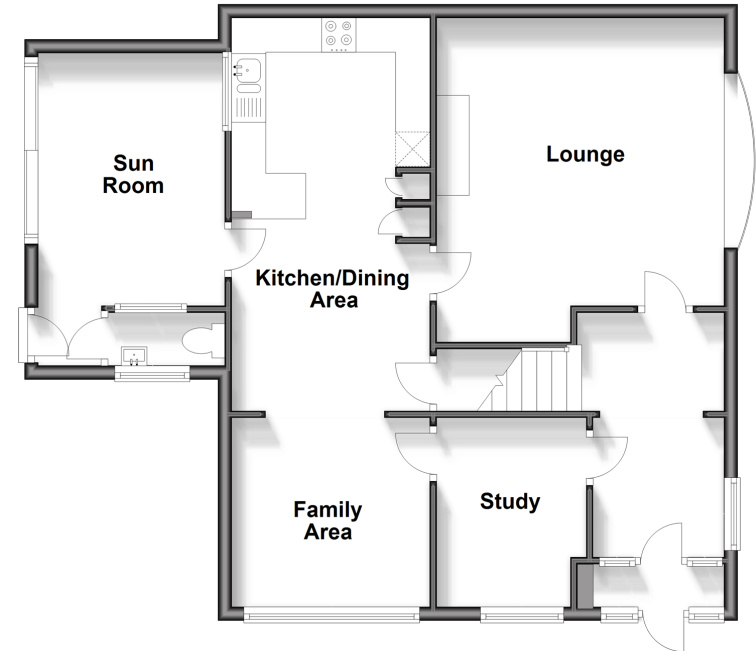
Landing
Bedroom 1: 11'8 x 11'0 (3.56m x 3.36m)
Bedroom 2: 12'2 x 9'2 (3.71m x 2.80m)
Bedroom 3: 9'0 x 7'5 (2.75m x 2.26m)
Shower Room: 7'8 x 5'4 (2.34m x 1.63m)

OUTSIDE

Rear Garden
Front Garden
2 x Single Garages
Driveway

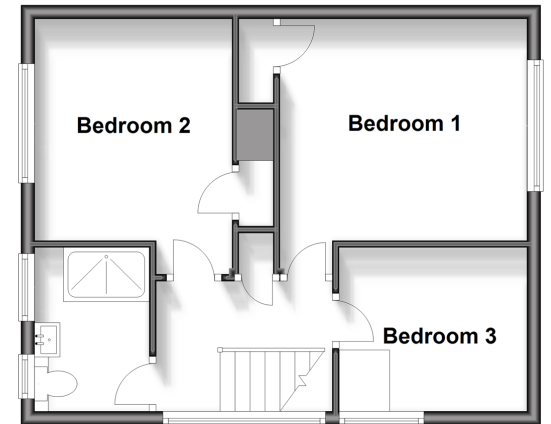
Ground Floor

Approx. 74.4 sq. metres (801.1 sq. feet)



First Floor

Approx. 41.0 sq. metres (441.5 sq. feet)



Call Maidstone - 01622 683737 ■ wardsofkent.co.uk

- Legal advice should be taken to verify fixtures/fittings, planning, alterations and/or lease details
- Appliances & services are untested, dimensions are approximate and floor plans are not to scale
- Through a Homewise Home For Life Plan people aged 60+ can secure this property for up to 59% less, by purchasing a Lifetime Lease.



13157942/20231129/KW5/MB