



Price
£250,000

Freehold

2x  1x  1x 

**Thornhill Place,
Maidstone, Kent ME14**

OVER 60?

Secure this property
for up to **59% less!**

Wards
Helping you move forwards



Main features

- Impressive Victorian era house
- High quality interior finish, contemporary styling
- Useful basement, ideal for storage or conversion
- High specification 1st floor shower room
- Town centre location, ideal for a wide range of amenities

Accommodation

GROUND FLOOR

Lounge/Dining Area: 23'3 x 11'3
(7.09m x 3.43m)

Kitchen: 10'0 x 7'8 (3.05m x 2.34m)

FIRST FLOOR

Landing

Bedroom 1: 11'4 x 10'8 (3.46m x 3.25m)

Bedroom 2: 6'7 x 6'4 (2.01m x 1.93m)

Shower Room: 13'7 x 5'3 (4.14m x 1.60m)

OUTSIDE

Rear Garden

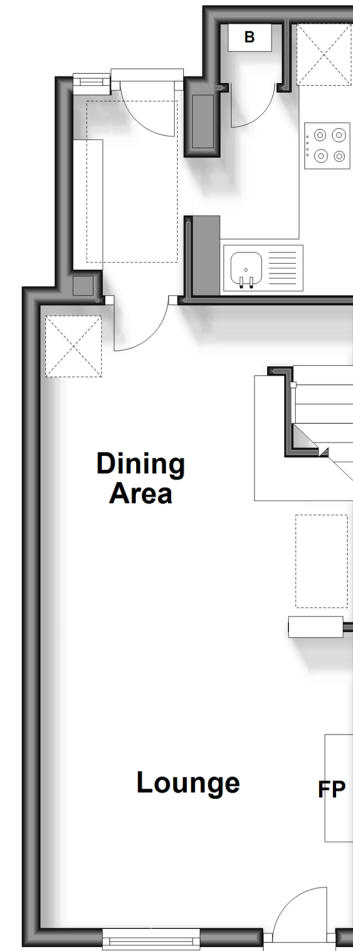
Small Front Garden

Call Maidstone - 01622 683737 ■ wardsofkent.co.uk

- Legal advice should be taken to verify fixtures/fittings, planning, alterations and/or lease details
- Appliances & services are untested, dimensions are approximate and floor plans are not to scale
- Through a Homewise Home For Life Plan people aged 60+ can secure this property for up to 59% less, by purchasing a Lifetime Lease.

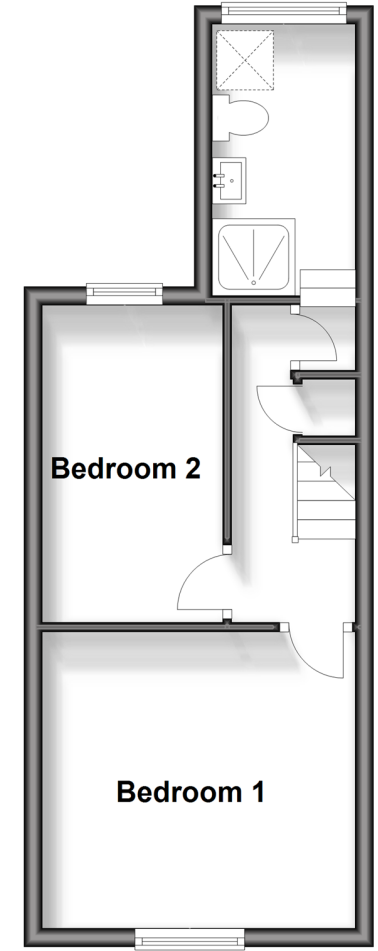
Ground Floor

Approx. 31.6 sq. metres (340.2 sq. feet)



First Floor

Approx. 28.4 sq. metres (305.5 sq. feet)



13157983/20231216/CV/MB