



**Guide Price**  
**£145,000**

**Leasehold**

1x  1x  1x 

**Birkdale Court,  
Buckland Road,  
Maidstone, Kent ME16**

**OVER 60?**

Secure this property  
for up to **59% less!**

*Wards*  
Helping you move forwards





## Main features

- 2nd floor apartment
- Very popular location in the town centre
- Allocated parking
- No chain
- Ideal for access to the shops, choice of train stations and the motorways

## Accommodation

### SECOND FLOOR

#### Entrance Hall

Lounge: 16'4 x 13'3 (4.98m x 4.04m)

Kitchen: 8'9 x 5'8 (2.67m x 1.73m)

Bedroom: 10'8 x 9'4 (3.25m x 2.85m)

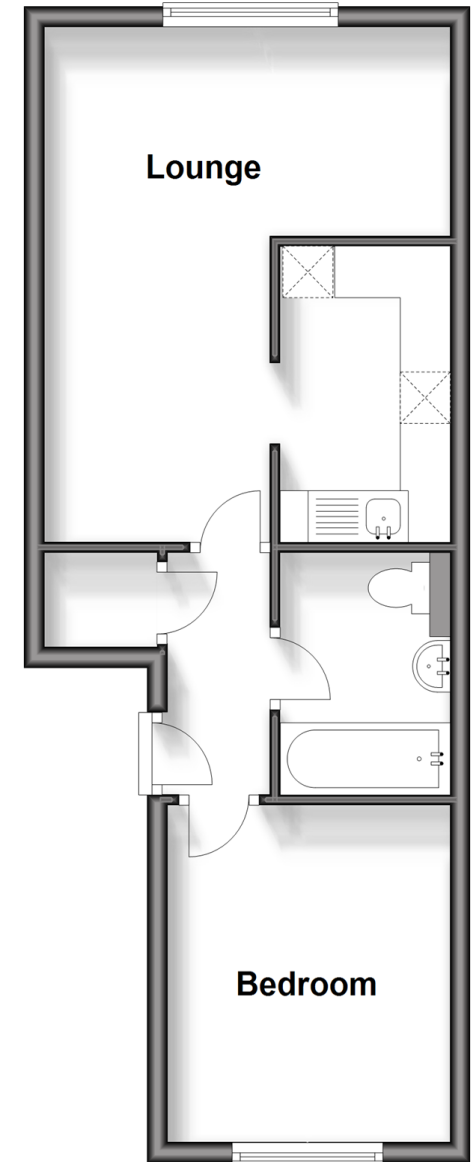
Bathroom

### OUTSIDE

Communal Grounds

## Second Floor

Approx. 38.0 sq. metres (409.2 sq. feet)



**Call Maidstone - 01622 683737 ■ [wardsofkent.co.uk](http://wardsofkent.co.uk)**

- Legal advice should be taken to verify fixtures/fittings, planning, alterations and/or lease details
- Appliances & services are untested, dimensions are approximate and floor plans are not to scale
- Through a Homewise Home For Life Plan people aged 60+ can secure this property for up to 59% less, by purchasing a Lifetime Lease.



13157991/20240425/SS1/MB