

OVER 60?

Secure this property
for up to **59% less!**



Price

£375,000

Freehold

4x  2x  1x 

Nottingham Avenue, Maidstone, Kent ME15

Wards
Helping you move forwards



Main features

- Impressive extended family house
- Superb log cabin/home bar/office to rear
- Large driveway providing parking for multiple vehicles
- Offered with no onward chain
- Ground floor bedroom with en-suite shower room

Accommodation

GROUND FLOOR

Entrance Porch
Hallway
Lounge: 17'0 x 11'0 (5.19m x 3.36m)
Kitchen: 13'0 x 8'0 (3.97m x 2.44m)
Bedroom 1: 15'0 x 9'0 (4.58m x 2.75m)
En-Suite Shower Room
Cabin/Bar/Office: 18'0 x 9'0 (5.49m x 2.75m)

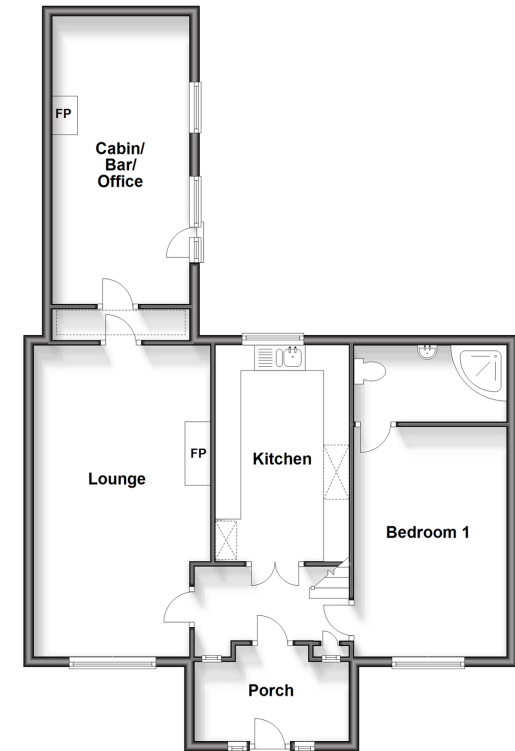
FIRST FLOOR

Landing
Bedroom 2: 14'0 x 9'0 (4.27m x 2.75m)
Bedroom 3: 10'0 x 7'0 (3.05m x 2.14m)
Bedroom 4: 9'10 x 8'0 (3.00m x 2.44m)
Bathroom

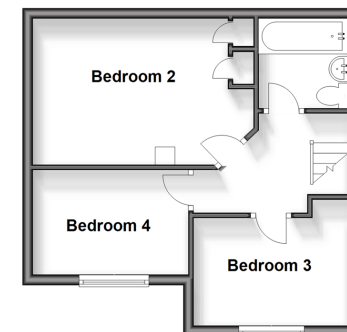
OUTSIDE

Rear Garden
Front Garden
Driveway

Ground Floor
Approx. 79.6 sq. metres (857.1 sq. feet)



First Floor
Approx. 34.4 sq. metres (370.0 sq. feet)



Call Maidstone - 01622 683737 ■ wardsofkent.co.uk

- Legal advice should be taken to verify fixtures/fittings, planning, alterations and/or lease details
- Appliances & services are untested, dimensions are approximate and floor plans are not to scale
- Through a Homewise Home For Life Plan people aged 60+ can secure this property for up to 59% less, by purchasing a Lifetime Lease.



13157995/20240408/CV/MB