



Guide Price
£230,000

Leasehold

2x  2x  1x 

**Hughenden Reach, Tovil,
Maidstone, Kent ME15**

OVER 60?

Secure this property
for up to **59% less!**

Wards
Helping you move forwards



Main features

- A spacious well presented ground floor flat
- Open plan lounge/diner with bespoke fitted kitchen
- En-suite facilities to bedroom 1
- Underground parking bay for residents only
- Set within a quiet cul-de-sac overlooking the River Medway

Accommodation

GROUND FLOOR

Hallway

Lounge/Diner: 17'9 x 12'8 (5.41m x 3.86m)

Balcony

Kitchen: 11'3 x 8'9 (3.43m x 2.67m)

Bedroom 1: 13'0 x 10'3 (3.97m x 3.13m)

En-Suite Shower Room

Bedroom 2: 11'5 x 11'4 (3.48m x 3.46m)

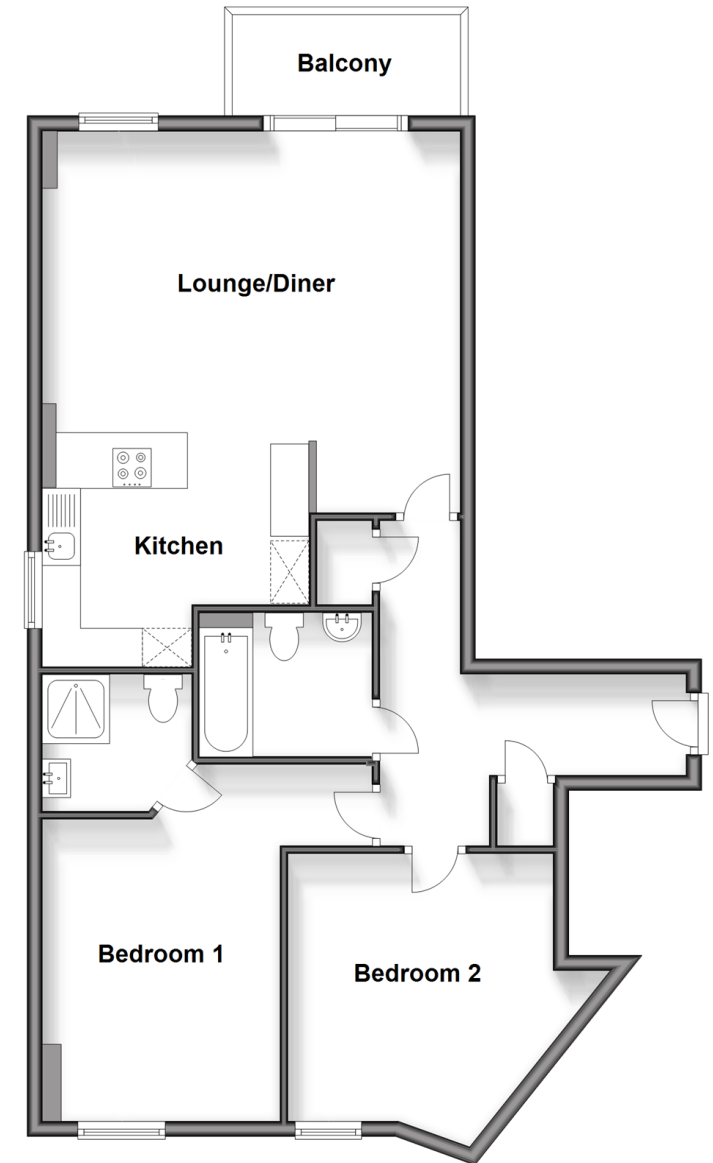
Bathroom

OUTSIDE

Underground Parking

Ground Floor

Approx. 79.7 sq. metres (858.3 sq. feet)



Call Maidstone - 01622 683737 ■ wardsofkent.co.uk

- Legal advice should be taken to verify fixtures/fittings, planning, alterations and/or lease details
- Appliances & services are untested, dimensions are approximate and floor plans are not to scale
- Through a Homewise Home For Life Plan people aged 60+ can secure this property for up to 59% less, by purchasing a Lifetime Lease.



13158001/20240210/CV/DS