



Price
£250,000

Freehold

2x  1x  1x 

**Yew Tree Cottages,
Grange Lane, Sandling,
Maidstone, Kent ME14**

Wards
Helping you move forwards



Main features

- Attractive country style cottage
- Well presented throughout, lovely kitchen and shower room
- Village location, surrounded by fields and woods, ideal for walking opportunities
- Off road parking to front
- Semi-rural yet close to amenities, such as the village pub and access for Maidstone town centre and the motorways

Accommodation

GROUND FLOOR

Entrance Porch

Lounge/Diner: 14'9 x 12'1 (4.50m x 3.69m)

Kitchen: 12'4 x 8'2 (3.76m x 2.49m)

Shower Room: 6'5 x 5'5 (1.96m x 1.65m)

FIRST FLOOR

Landing

Bedroom 1: 10'9 x 10'0 (3.28m x 3.05m)

Bedroom 2: 8'3 x 7'5 (2.52m x 2.26m)

OUTSIDE

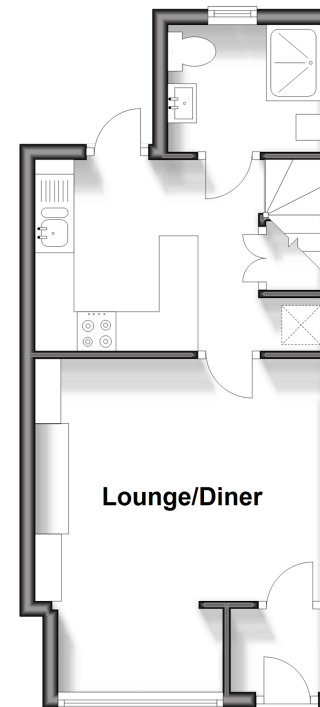
Rear Garden

Front Garden

Off Road Parking

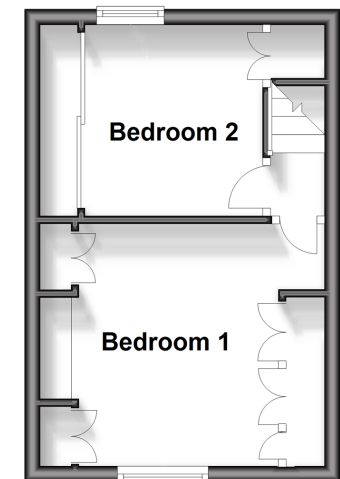
Ground Floor

Approx. 28.0 sq. metres (301.4 sq. feet)



First Floor

Approx. 20.5 sq. metres (220.5 sq. feet)



Call Maidstone - 01622 683737 ■ wardsofkent.co.uk

■ Legal advice should be taken to verify fixtures/fittings, planning, alterations and/or lease details

■ Appliances & services are untested, dimensions are approximate and floor plans are not to scale



13158007/20240120/CV/MB