



OVER 60?

Secure this property
for up to **59% less!**

Price
£325,000

Freehold

2x  1x  1x 

**Lower Fant Road,
Maidstone, Kent ME16**

Wards
Helping you move forwards



Main features

- Accommodation arranged over 3 floors this home is both spacious and versatile
- Open plan 'L' shaped kitchen/dining area
- Modern Victorian style bathroom and a ground floor cloakroom
- Generous rear garden
- Double glazing and central heating

Accommodation

GROUND FLOOR

Hallway

Lounge: 12'3 x 10'8 (3.74m x 3.25m)

Kitchen/Dining Area: (L-shaped) 9'6 x 8'2 (2.90m x 2.49m) plus 14'3 x 10'5 (4.35m x 3.18m)

Toilet

BASEMENT

Basement: 12'0 x 11'11 (3.66m x 3.63m)

FIRST FLOOR

Landing

Bedroom 1: 14'2 x 12'3 (4.32m x 3.74m)

Dressing Room

Bedroom 2: 10'4 x 8'7 (3.15m x 2.62m)

Bathroom

OUTSIDE

Rear Garden

Front Garden

Ground Floor

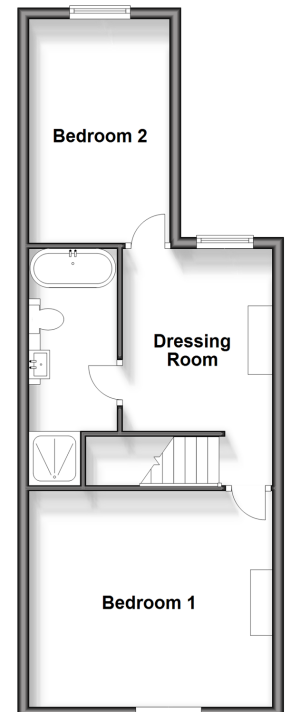
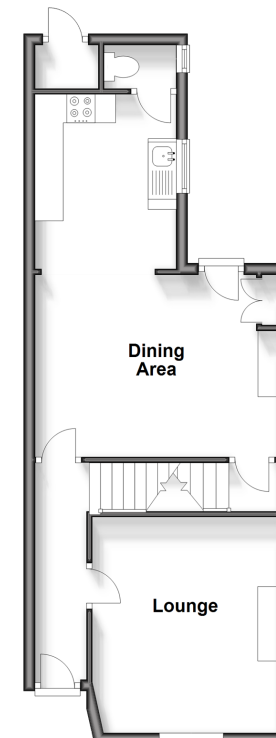
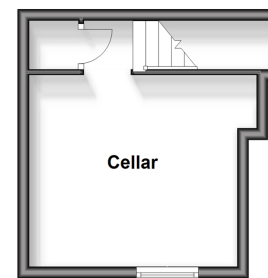
Approx. 43.6 sq. metres (469.3 sq. feet)

First Floor

Approx. 44.7 sq. metres (481.6 sq. feet)

Basement

Approx. 16.7 sq. metres (180.1 sq. feet)



Call Maidstone - 01622 683737 ■ wardsofkent.co.uk

■ Legal advice should be taken to verify fixtures/fittings, planning, alterations and/or lease details
 ■ Through a Homewise Home For Life Plan people aged 60+ can secure this property for up to 59% less, by purchasing a Lifetime Lease.

■ Appliances & services are untested, dimensions are approximate and floor plans are not to scale



13158018/20240227/CV/DS