



**Price**

**£400,000**

**Leasehold**

2x  2x  1x 

**Alexander Court, Mote  
Park, Maidstone, Kent  
ME15**

**OVER 60?**

Secure this property  
for up to **59% less!**

*Wards*  
Helping you move forwards



## Main features

- Exclusive retirement apartment for the over 55's Offered chain free
- Located within the grounds of Mote Park with its extensive grounds and lake
- Boasting a restaurant, indoor pool, library & so much more
- Luxury retirement living in style set in the heart of Maidstone

## Accommodation

### GROUND FLOOR

#### Hallway

Kitchen: 11'10 x 8'1 (3.61m x 2.47m)

Lounge/Diner: 15'9 x 11'10 (4.80m x 3.61m)

Bedroom 1: 19'10 (6.05m) narrowing to 12'2 (3.71m) x 9'6 (2.90m)

#### En-Suite Shower Room

Bedroom 2: 10'7 x 9'5 (3.23m x 2.87m)

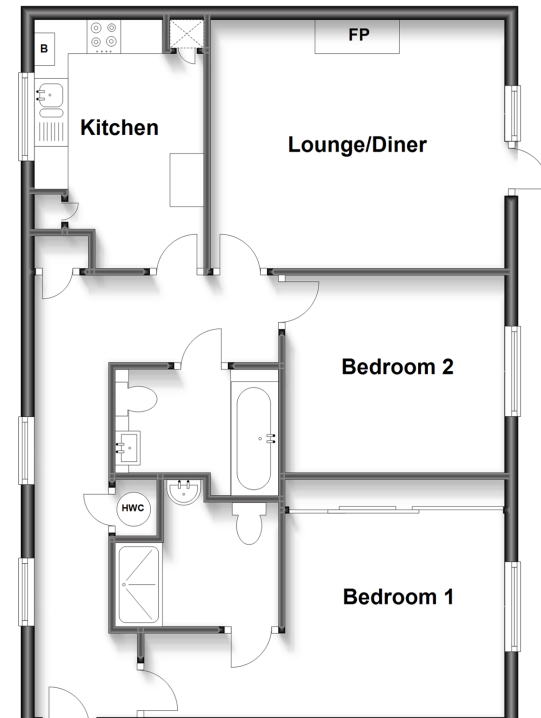
#### Bathroom

### OUTSIDE

Communal Grounds

Allocated Parking Space

**Ground Floor**  
Approx. 71.6 sq. metres (771.0 sq. feet)



**Call Maidstone - 01622 683737 ■ wardsofkent.co.uk**

■ Legal advice should be taken to verify fixtures/fittings, planning, alterations and/or lease details  
■ Through a Homewise Home For Life Plan people aged 60+ can secure this property for up to 59% less, by purchasing a Lifetime Lease.

■ Appliances & services are untested, dimensions are approximate and floor plans are not to scale