



OVER 60?

Secure this property
for up to **59% less!**

Price

£375,000

Freehold

4x  3x  1x 

**Old Dover Works,
Maidstone, Kent ME16**

Wards
Helping you move forwards

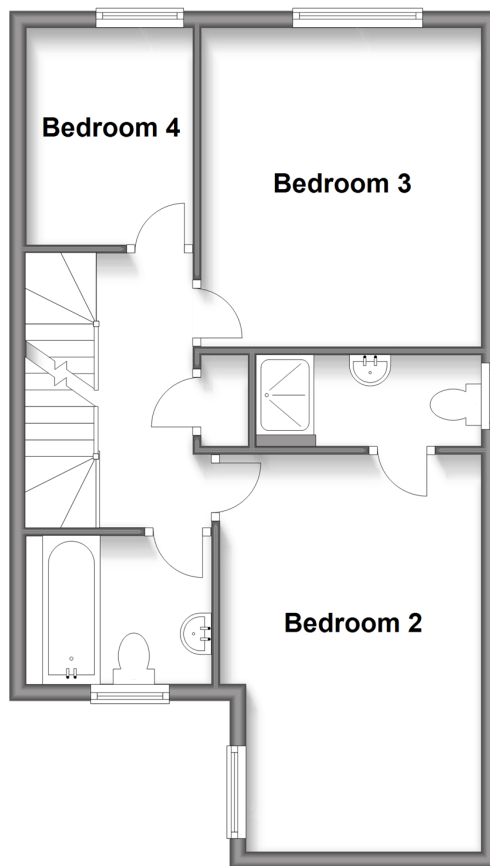
Ground Floor

Approx. 48.7 sq. metres (524.1 sq. feet)



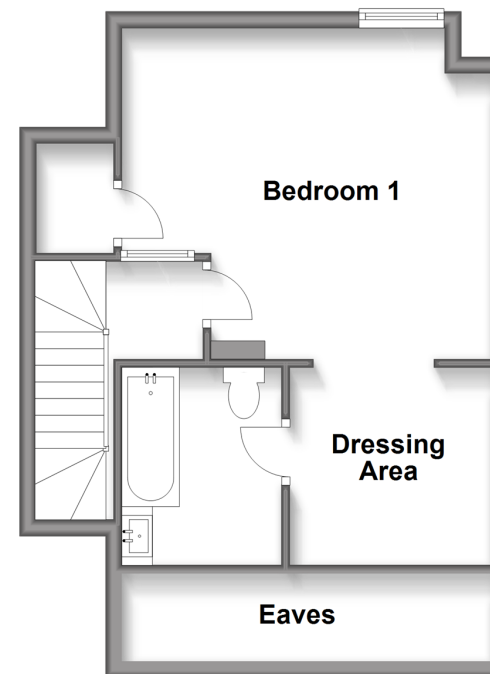
First Floor

Approx. 35.4 sq. metres (380.7 sq. feet)



Second Floor

Approx. 38.5 sq. metres (414.0 sq. feet)



Accommodation

GROUND FLOOR

Cloakroom

Hallway

Kitchen/Dining Area: 17'9 x 10'0 (5.41m x 3.05m) plus 9'11 x 6'10 (3.02m x 2.08m)

Lounge: 18'3 x 10'8 (5.57m x 3.25m)

FIRST FLOOR

Landing

Bedroom 2: 15'8 x 10'6 (4.78m x 3.20m)

En-Suite Shower Room: 8'7 x 3'7 (2.62m x 1.09m)

Bedroom 3: 12'7 x 11'3 (3.84m x 3.43m)

Bedroom 4: 8'6 x 6'10 (2.59m x 2.08m)

Bathroom

SECOND FLOOR

Landing

Bedroom 1: 15'1 x 13'5 (4.60m x 4.09m)

En-Suite Bathroom: 7'9 x 6'5 (2.36m x 1.96m)

Dressing Area: 7'9 x 7'5 (2.36m x 2.26m)

OUTSIDE

Rear Garden

Workshop

Front Courtyard Garden

2 Allocated Parking Spaces



Main features

- Quiet yet convenient location with ample parking
- En-suite facilities and dressing area to the second floor
- 2nd En-suite and family bathroom
- Excellent schools within walking distance including Oakwood Complex and St Simon Stock secondary schools
- Impressive layout and additional section of garden



Nearest Schools

Primary Schools: Maidstone, St Michael's C of E Junior School 0.2 miles, Archbishop Courtenay Primary 0.3 miles, Brunswick House Primary 0.5 miles



Transport Information

Train Stations: Maidstone West 0.0 miles, Maidstone Barracks 0.4 miles, Maidstone East 0.4 miles



Address

Old Dover Works, Maidstone, Kent ME16



Directions

For directions to this property please contact us.



Wards
Helping you move forwards

Call Maidstone Branch 01622 683737 ■ wardsofkent.co.uk



■ Legal advice should be taken to verify fixtures/fittings, planning, alterations and/or lease details ■ Appliances & services are untested, dimensions are approximate and floor plans are not to scale
■ Through a Homewise Home For Life Plan people aged 60+ can secure this property for up to 59% less, by purchasing a Lifetime Lease.



13158051/20240416/CV/KW5