



OVER 60?

Secure this property
for up to **59% less!**

Price
£315,000

Freehold

3x  1x  1x 

**Sidney Street,
Maidstone, Kent ME16**

Wards
Helping you move forwards



Main features

- A really well presented family house
- Fantastic low maintenance rear garden
- Large workshop, fish pond and seating areas
- Modern kitchen and bathroom, contemporary interior
- Excellent location for amenities including schools, the hospital, railway stations and access for motorways

Accommodation

GROUND FLOOR

Porch

Hallway

Lounge: 13'9 x 13'1 (4.19m x 3.99m)

Kitchen/Diner: 16'2 x 10'4 (4.93m x 3.15m)

Bathroom: 7'9 x 6'10 (2.36m x 2.08m)

FIRST FLOOR

Landing

Bedroom 1: 13'3 x 10'7 (4.04m x 3.23m)

Bedroom 2: 11'7 x 8'5 (3.53m x 2.57m)

Bedroom 3: 8'5 x 7'6 (2.57m x 2.29m)

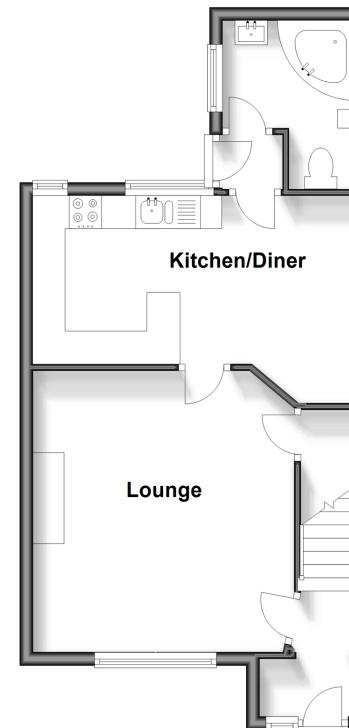
OUTSIDE

Rear Garden

Front Garden

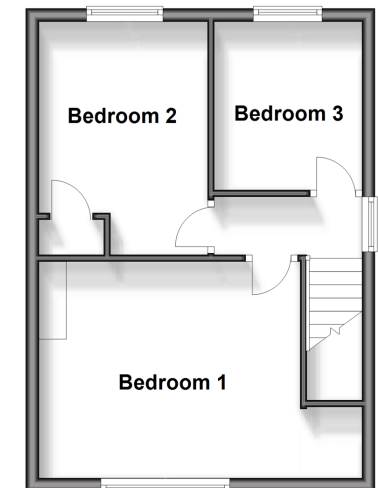
Ground Floor

Approx. 41.3 sq. metres (444.5 sq. feet)



First Floor

Approx. 34.9 sq. metres (376.0 sq. feet)



Call Maidstone - 01622 683737 ■ wardsofkent.co.uk

■ Legal advice should be taken to verify fixtures/fittings, planning, alterations and/or lease details
 ■ Through a Homewise Home For Life Plan people aged 60+ can secure this property for up to 59% less, by purchasing a Lifetime Lease.

■ Appliances & services are untested, dimensions are approximate and floor plans are not to scale



13158063/20240410/MB/MB