



OVER 60?

Secure this property
for up to **59% less!**

Price

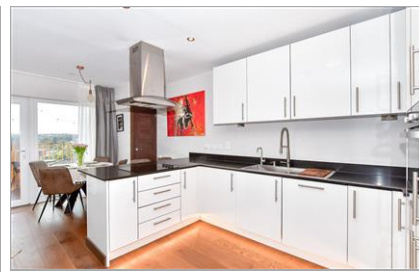
£265,000

Leasehold

2x  2x  1x 

**Guinevere Point,
Waterhouse Avenue,
Maidstone, Kent ME14**

Wards
Helping you move forwards



Main features

- **Luxury 11th floor apartment**
- **Stunning panoramic rear facing views from the tallest building in Maidstone**
- **High specification interior including integrated appliances**
- **Prime location to Whatman Park, River Medway, motorway and rail links**
- **Lift access and secure covered parking, electric video intercom security system**

Accommodation

ELEVENTH FLOOR

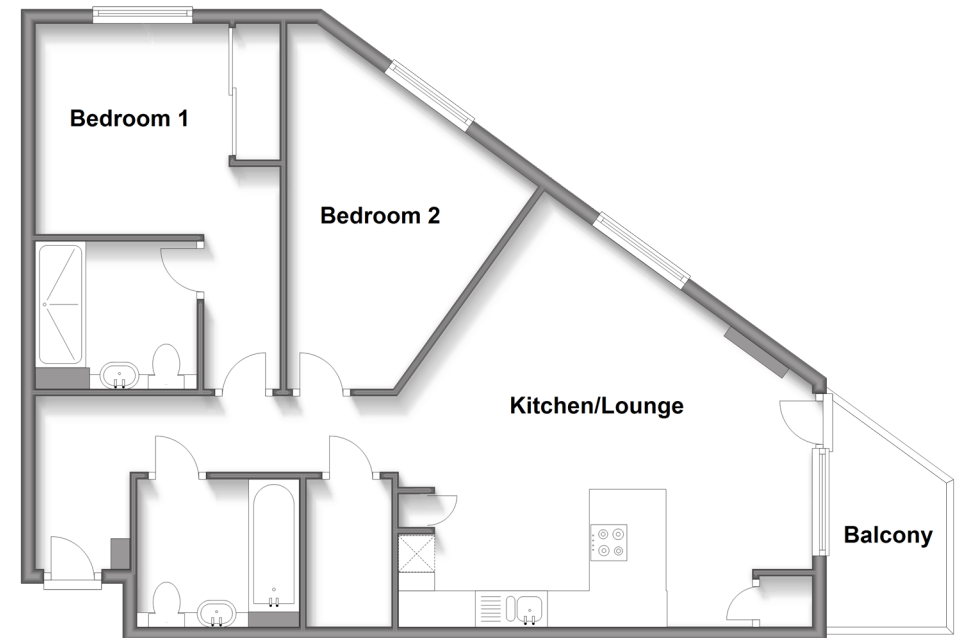
- Hallway
- Kitchen/Lounge: 18'2 x 17'0 (5.54m x 5.19m)
- Balcony
- Bedroom 1: 11'1 x 9'5 (3.38m x 2.87m)
- En-Suite Shower Room
- Bedroom 2: 11'5 x 6'9 (3.48m x 2.06m)
- Bathroom

OUTSIDE

- Secure Covered Parking

Eleventh Floor

Approx. 71.5 sq. metres (770.1 sq. feet)



Call Maidstone - 01622 683737 ■ wardsofkent.co.uk

■ Legal advice should be taken to verify fixtures/fittings, planning, alterations and/or lease details
 ■ Through a Homewise Home For Life Plan people aged 60+ can secure this property for up to 59% less, by purchasing a Lifetime Lease.

■ Appliances & services are untested, dimensions are approximate and floor plans are not to scale



13158072/20240221/CV/LB01