



Price
£175,000

Leasehold

2x  1x  1x 

**Birkdale Court,
Buckland Road,
Maidstone, Kent ME16**

OVER 60?

Secure this property
for up to **59% less!**

Wards
Helping you move forwards



Main features

- Fourth floor apartment
- Extremely sought after location
- Ideal for local shops and the town centre
- Close to the station, motorways and a short walk from the River Medway
- Well presented and maintained

Accommodation

FOURTH FLOOR

Hallway

Lounge/Diner: 19'7 x 10'6 (5.97m x 3.20m)

Kitchen: 9'8 x 7'9 (2.95m x 2.36m)

Bedroom 1: 10'9 x 6'2 (3.28m x 1.88m)

Bedroom 2: 10'2 x 8'9 (3.10m x 2.67m)

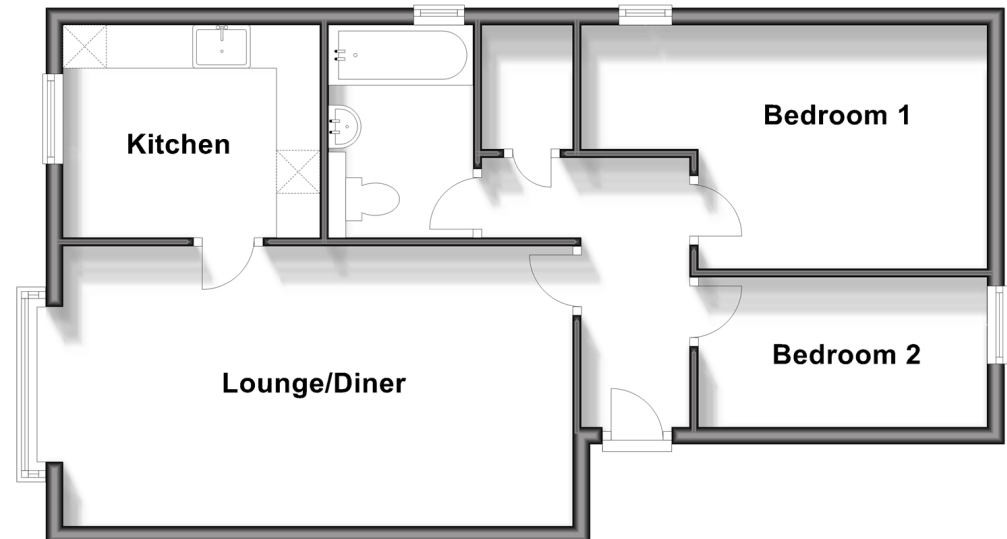
Bathroom

OUTSIDE

Communal Garden

Fourth Floor

Approx. 56.9 sq. metres (612.6 sq. feet)



Call Maidstone - 01622 683737 ■ wardsofkent.co.uk

■ Legal advice should be taken to verify fixtures/fittings, planning, alterations and/or lease details
 ■ Through a Homewise Home For Life Plan people aged 60+ can secure this property for up to 59% less, by purchasing a Lifetime Lease.

■ Appliances & services are untested, dimensions are approximate and floor plans are not to scale



13158094/20240429/SS1/LB01